

# 2401 2232 Douglas Road, Burnaby

\$828,000



The perfect blend of both quality and sophistication is what makes AFFINITY BY BOSA one of the most highly sought after buildings in BRENTWOOD PARK area. This bright, quiet, & open 2 Bed, 2 Full Bath south-east facing CORNER UNIT home hovers from the 24th floor & features stainless steel appliances, beautiful laminate floors, gas range, high-end cabinetry, lots of windows, 1 locker, & TWO PARKING! Enjoy BBQing and soak in the views of the North shore Mountains, Mt Baker, & Metrotown skyline from your private balcony. Amenities include exercise room, events lounge, massive 3rd floor dog friendly garden area, & guest suite. With a short walk to SkyTrain, Brentwood Town Center, various restaurants, & shops, this location can't be beat! OPEN HOUSE Sun Jul 29th, 2-4pm.

## KEY INFORMATION

MLS® R2290201

Residential Attached

Brentwood Park

2 Bedrooms

2 Bathrooms

935 SF

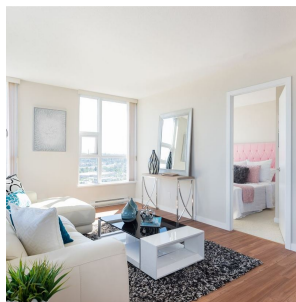
\$281.86 Maintenance Fees

## FEATURES

Year Built: 2012

Views: MOUNTAINS & METROTOWN SKYLINE

Listed By: rennie & associates realty ltd.



**Eric Zamora** PREC\*  
778.389.4556  
ezamora@rennie.com  
rennie.com/ericzamora

**rennie**