

1807 13688 100 Avenue, Surrey

\$558,000



Large, bright 2bdrm/2bath corner home in Park Place! Expansive windows, open balcony & bedroom separation makes this home perfect for living & entertaining. Kitchen includes Corian countertops, polished chrome faucets with double sink, porcelain tile flooring and large bar-style counter. Master bedroom offers walk-in closet and ensuite bathroom w/limestone countertops. Over 115 SqFt patio with views to green space, mountains and city. Amazing building amenities w/24 hour concierge, fitness, yoga, bowling alley, theatre & more. Surrey City Centre is a thriving community, expanding three times faster than the rest of Vancouver. Award-winning architecture, SFU expansion, 250 parks, 1,300 businesses & rapid transit to downtown in 43 minutes.

KEY INFORMATION

MLS® R2287564

Residential Attached

Whalley

2 Bedrooms

2 Bathrooms

900 SF

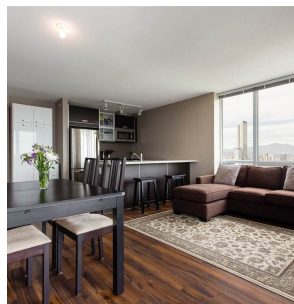
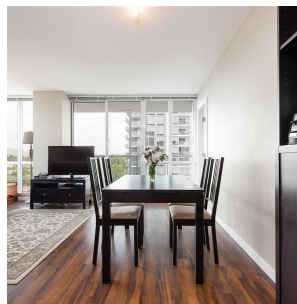
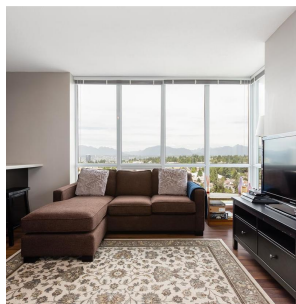
\$327.44 Maintenance Fees

FEATURES

Year Built: 2011

Views: MOUNT BAKER + CITY

Listed By: rennie & associates realty ltd.



Jenna Van Alstine

778.558.3355

jvanalstine@rennie.com

rennie.com/jennavanalstine

rennie