

20 2688 Mountain Highway, North Vancouver

\$1,099,000



This duplex-style townhouse is located in one of Lynn Valley's most popular complexes; Craftsman Estates. This bright home is located at the centre of the complex tucked away from Mountain Highway and lives large reminiscent of a cozy heritage home. Highlighted by a stunning main floor renovation which includes a remodeled kitchen, powder room, designer paint and updated light fixtures, this home is move in ready. Upstairs offers large bedrooms, another renovated bathroom, large ensuite and newer washer and dryer. This is one of Lynn Valley's finest locations as you are steps from transit, the library, schools, parks and all that Lynn Valley has to offer! This home comes with two underground parking spaces (tandem spots) and a huge private locker/storage room! Truly an incredible value!

KEY INFORMATION

MLS® R2271137

Residential Attached

Westlynn

3 Bedrooms

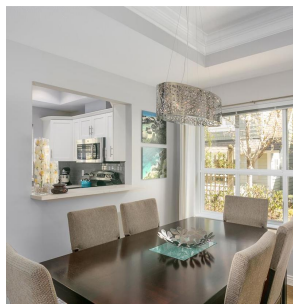
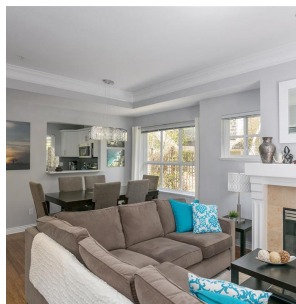
3 Bathrooms

1,733 SF

FEATURES

Year Built: 2003

Listed By: rennie & associates realty ltd.



Derek Kai PREC*
604.868.1666
dkai@rennie.com
rennie.com/derekkai



Susan Chow PREC*
604.765.8269
schow@rennie.com
rennie.com/susanchow

rennie