

905 1788 Columbia Street, Vancouver

\$749,880



Brand new 1 bdrm + den, large patio beauty w/ city, rooftop garden + mountain views at Epic at West! This bright & open floorplan features flr to ceiling windows that draw in the wrap around views from 180 degrees, located on the quiet side of the building & situated at the gateway of the False Creek, a waterfront community anchored by the seawall. Contemporary lifestyle featuring German & Italian SS appliances, Induction cooktop, Torlys German engineered laminate floors, illuminated bathroom mirrors, sleek UV roller shades, Quartz (Carrara inspired) countertops & Backsplash, Shower wall niche & more! 43,000 sq ft of retail, daycare, Canada Line, Skytrain, water taxis. 1 parking & 1 storage locker. OPEN HOUSE, SAT:April 28th & SUN:April 29th: 2-4pm.:

KEY INFORMATION

MLS® R2258127

Residential Attached

False Creek

1 Bedroom

1 Bathroom

594 SF

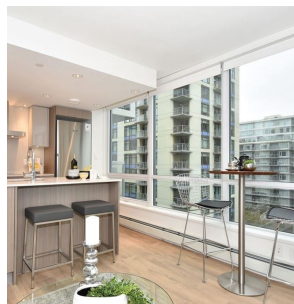
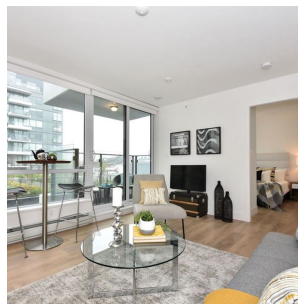
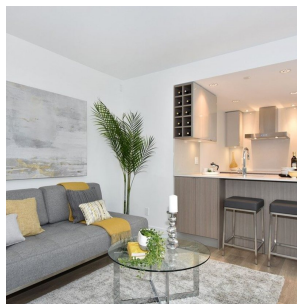
\$288.00 Maintenance Fees

FEATURES

Year Built: 2018

Views: CITY, ROOF GARDEN & MTN VIEWS

Listed By: rennie & associates realty ltd.



Brandon Price PREC*
604.765.9555
bprice@rennie.com
rennie.com/brandanprice

rennie