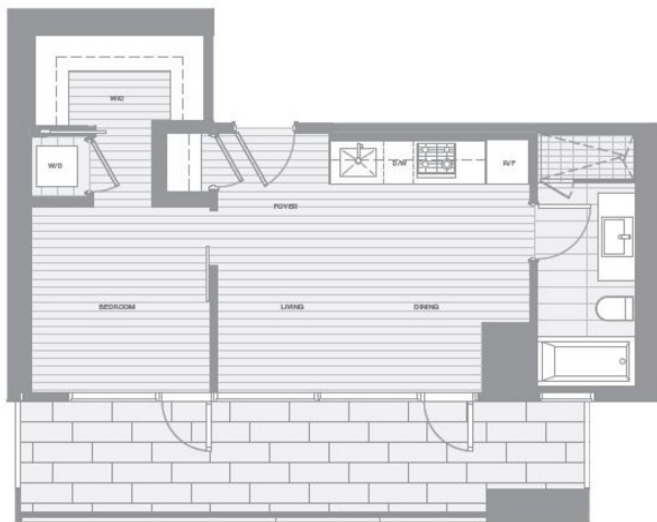


# 2103 1480 Howe Street, Vancouver

\$789,900

ER



SELLER'S AGENTS (REALTOR, OR ANY OTHER PERSON ON BEHALF OF THE DEVELOPER, OTHER THAN THOSE CONTAINED IN A CONTRACT OF PURCHASE AND SALE BETWEEN A PURCHASER AND THE DEVELOPER AND IN THE EXCLUSIVE STATEMENT FOR THE PURCHASER) HEREBY REPRESENT AND WARRANT THAT THE MATERIAL INFORMATION, DETAILS, DIMENSIONS, LAYOUT AND FLOORPLANS SET OUT HEREIN OR OTHERWISE VIEWED BY THE PURCHASER ARE APPROXIMATE AND SUBJECT TO CHANGE WITHOUT NOTICE.

AP  
SE  
2

ONE BE  
TOTAL  
Indoor Li  
Outdoor /  
From the  
foyer, the  
terrace at  
The gene  
of this ho  
the open-

From the moment of arrival in the well-appointed foyer, the gaze is drawn to the sunny south-facing terrace and views of Granville Island and its marinas. The generous copper-clad balcony spans the length of this home, accessible by both the bedroom and the open-concept living and dining area. The first 'super prime' tower features state of the art LEED platinum technology designed by world famous star architect Bjarke Ingels Group. Highlights include Miele appliances, sleek hardwood flooring, finger printing high-speed elevators, a BMW car share program, the Fairmont Pacific concierge service, outdoor swimming pool & recreation & new restaurants at your footsteps. Outstanding location with the seawall & Canada Line nearby.

### KEY INFORMATION

MLS® R2185337

Residential Attached

Yaletown

1 Bedroom

1 Bathroom

513 SF

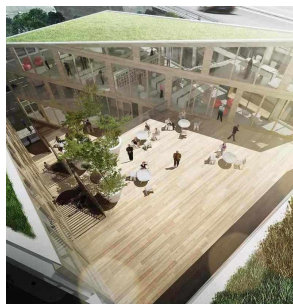
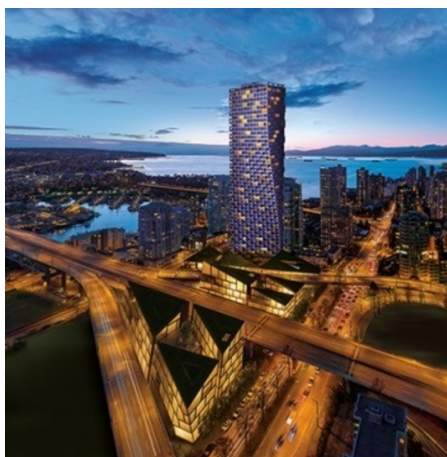
\$292.45 Maintenance Fees

### FEATURES

Year Built: 2019

Views: GRANVILLE ISLAND & ENGLISH BAY

Listed By: rennie & associates realty ltd.



**Jane Chu** PREC\*  
778.886.3303  
janechu@rennie.com  
rennie.com/janechu

**rennie**