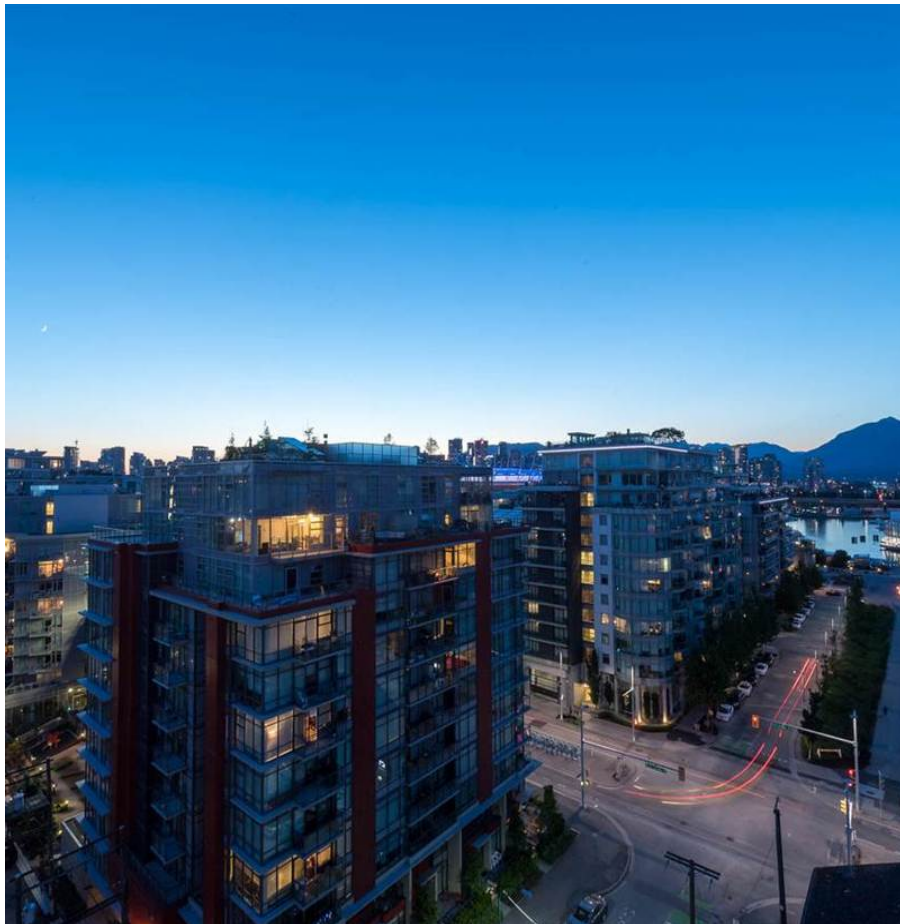


1105 1788 Ontario Street, Vancouver

\$989,900



The highest plan of its type in the building! Welcome to the coveted North/West Sub-Penthouse of the PROXIMITY building by Bastion Developments. This 815 SqFt corner home offers perfectly segregated Bedrooms on either side of the home, both with Ensuites. The open concept Living Room / Dining Room / Kitchen is a perfectly flowing entertainment space of guests or quiet nights in with the family. Stone countertops throughout with stainless steel appliances in this high-end kitchen have your home feeling as contemporary as the day is was completed. This home comes with 1 Parking Stall & 1 Storage Locker. PROXIMITY is situated right on the edge of the ever so amenity rich Olympic Village!

KEY INFORMATION

MLS® R2187511

Residential Attached

Mount Pleasant

2 Bedrooms

2 Bathrooms

815 SF

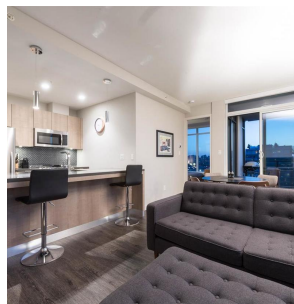
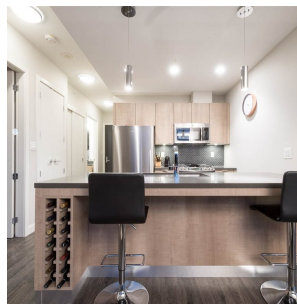
\$392.00 Maintenance Fees

FEATURES

Year Built: 2016

Views: North Shore Mountains & Water

Listed By: rennie & associates realty ltd.



Ryan Wong PREC*
604.551.7966
rwong@rennie.com
rennie.com/ryanwong

rennie