

305 1495 Richards Street, Vancouver

\$829,000



This prime Yaletown location can't be beat! A few steps away from George Wainborn Park and seawall is the luxurious AZURA II by Concord Pacific. With no wasted space, this large 752 sq ft 1 Bed + Den suite features open kitchen, granite countertops, insuite storage/flex room, S/S appliances, gas range, sleek cabinetry, beautiful engineered hardwood floors, fresh coat of paint throughout, & 1 parking. Generous sized den can fit a small bed. Soak in the views towards the park from your private balcony. Enjoy using all the resort style amenities at the SUPER CLUB which includes indoor lap pool, squash court, sauna, steam room, exercise room, guest suite, media rooms & 24 hour concierge!

KEY INFORMATION

MLS® R2192041

Residential Attached

Yaletown

1 Bedroom

1 Bathroom

752 SF

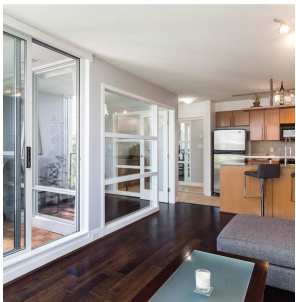
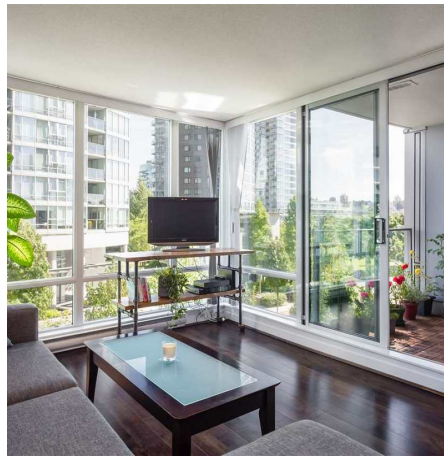
\$380.97 Maintenance Fees

FEATURES

Year Built: 2004

Views: PARK

Listed By: rennie & associates realty ltd.



Eric Zamora PREC*
778.389.4556
ezamora@rennie.com
rennie.com/ericzamora

rennie