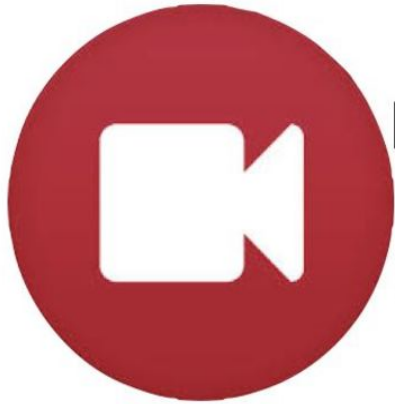
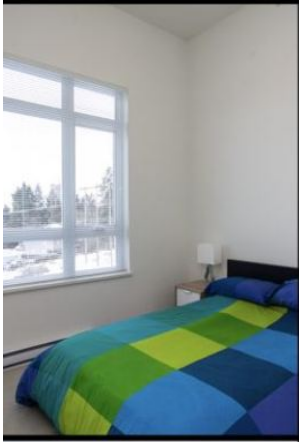


411 13919 Fraser Highway, Surrey

\$450,000



Don't miss
the
video

You found it. This almost 1300 sqft TOP FLOOR corner unit has everything you have been looking for. In a central location, just a short walk to the skytrain, shopping and dining, this 2015 built unit features its own gym. With 3 bedrooms in total, you have all the space you will need. Modern finishings include quartz countertops, wide plank sandal wood laminate flooring, new paint, 2 balconies and so much more. Be sure to check out the additional information at the online open house video on our website. Up to 2 domestic pets, with no size or breed restrictions. You found it!



KEY INFORMATION

MLS® R2129635

Residential Attached

Whalley

3 Bedrooms

2 Bathrooms

1,286 SF

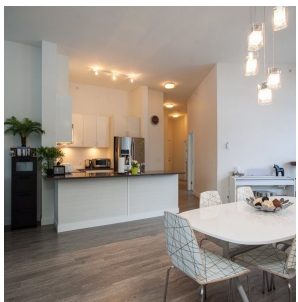
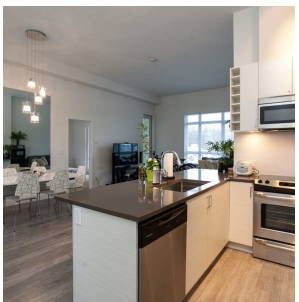
\$366.09 Maintenance Fees

FEATURES

Year Built: 2015

Views: Mountains

Listed By: rennie & associates realty ltd.



Shelly Vellani PREC*

604.710.3681

svellani@rennie.com

rennie.com/shellyvellani

rennie