

Sph3 668 Columbia Street, New Westminster

\$739,900



Iconic Trapp & Holbrook in the booming downtown New West area. Wonderful & Functional, this unique Subpenthouse floor plan offers two generous bedrooms, a large den and separated dining / living in an open floor plan. A corner suite with 3 balconies nearing 400 square feet of outdoor atop your 1004 sq ft interior. Steps to shopping, skytrain, groceries, New West's Pier Park, Movies, etc. Parking & Storage included. Enjoy a fewer number of homes on this exclusive floor housing wonderful neighbours, Useful amenities and Prime location. Move in ready & like new, GST paid. Open House on Saturday March 18 1-3pm.

KEY INFORMATION

MLS® R2134091

Residential Attached

Quay

2 Bedrooms

2 Bathrooms

1,004 SF

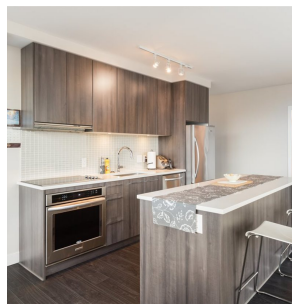
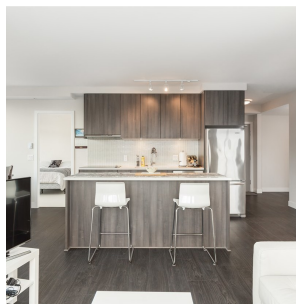
\$313.09 Maintenance Fees

FEATURES

Year Built: 2015

Views: MOUNTAINS, CITY & FRASER RIVER

Listed By: rennie & associates realty ltd.



Art Seroff PREC*
778.223.0033
aseroff@rennie.com
rennie.com/artseroff

rennie