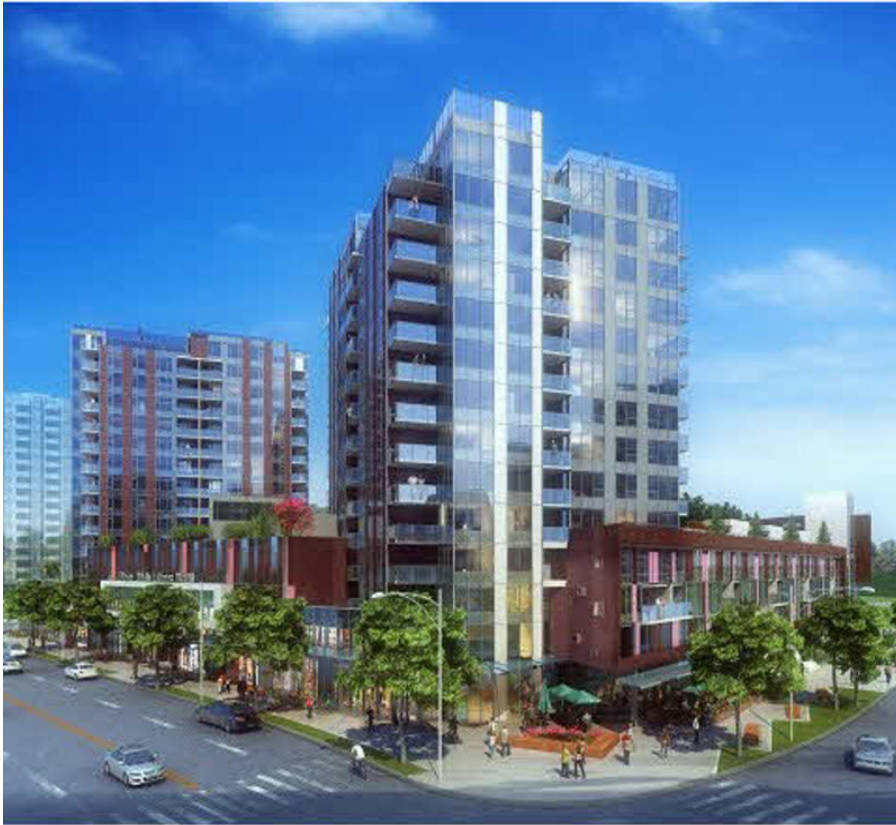


905 7468 Lansdowne Road, Richmond

\$639,900



Perfect for families or downsizers. This bright, corner, home has a flexible floor plan and upscale finishes. The famous Cressey Kitchen includes integrated European appliances, quartz counter and marble backsplash, 5 burner gas cooktop and huge fridge, Kinetico water filter and pot lights. Other luxury features include wood floor throughout, heated marble floor in ensuite, A/C and healthy home features for cleaner air and quieter living. Enjoy the sports court, steam rooms, cabana, roof garden or the shops, restaurants and parks/trails close by. Master planned Oval Village is close to everything but away from hustle and bustle with Skytrain in walking distance. Open 12-5pm except Friday.

KEY INFORMATION

MLS® V1103068

Residential Attached

Brighthouse

3 Bedrooms

0 Bathrooms

1,033 SF

\$416.75 Maintenance Fees

FEATURES

Year Built: 2016

Listed By: rennie & associates realty ltd.



Susan Chow PREC*
604.765.8269
schow@rennie.com
rennie.com/susanchow

rennie