

2005 4815 Eldorado Mews, Vancouver

\$349,900



A perfect opportunity to call 2300 Kingsway home!! This excellently laid out 1 bedroom unit features a chef's kitchen w/ granite countertops, S/S appliances, fully tiled spa-like bathroom and beautiful laminate flooring. Enjoy INCREDIBLE VIEWS of Central Park and Burnaby Mountain from your private balcony. Amenities include a well equipped fitness center, amenity/games room, meeting rooms and a breathtaking rooftop terrace! You simply cannot beat this PRIME LOCATION, just a short drive to downtown, Richmond, Burnaby and Metrotown for all your shopping, dining and entertainment needs. 1 parking and 1 storage locker included. Call today for your own private showing!

KEY INFORMATION

MLS® V1066055

Residential Attached

Collingwood

1 Bedroom

1 Bathroom

549 SF

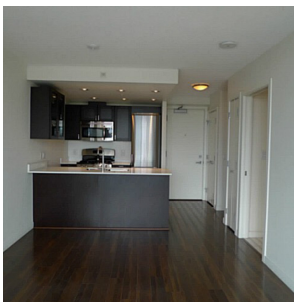
\$248.02 Maintenance Fees

FEATURES

Year Built: 2013

Views: CENTRAL PARK AND BURNABY MOUNTAIN

Listed By: rennie & associates realty ltd.



Salina Kai PREC*
604.773.7013
skai@rennie.com
rennie.com/salinakai



Danny Chow PREC*
604.765.2469
dchow@rennie.com
rennie.com/dannychow

rennie