

1205 3070 Guildford Way, Coquitlam

\$335,000



Welcome to Lakeside Terrace! This NE 2 bedroom + 2 full bath corner unit features beautiful floor-to-ceiling windows for plenty of natural lighting, large balcony perfect for entertaining guests in the summer time, hardwood flooring, granite countertops & stainless steel appliances. Enjoy fantastic views of Westwood Plateau and the Coast Mountains. Steps away from Lafarge Lake, Coquitlam Centre, Douglas College, City Centre Aquatic Complex, public transit & much more! Building amenities include indoor pool, gym, sauna & hot tub. Call today!

KEY INFORMATION

MLS® V1067737

Residential Attached

North Coquitlam

2 Bedrooms

2 Bathrooms

1,048 SF

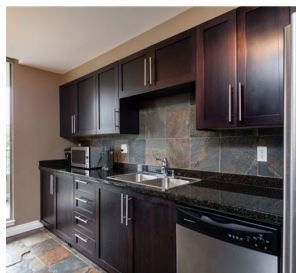
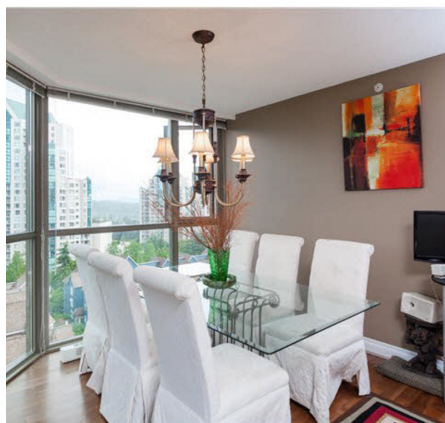
\$406.03 Maintenance Fees

FEATURES

Year Built: 1995

Views: MOUNTAIN VIEWS

Listed By: rennie & associates realty ltd.



Simon Lai PREC*
778.881.3603
slai@rennie.com
rennie.com/simonlai



Irene De Guzman
604.720.1996
ideguzman@rennie.com
rennie.com/irenedeguzman

rennie