

1102 489 Interurban Way, Vancouver

\$648,000



GST Paid Brand new building in one of the most popular developments along Cambie corridor location! Built by PCI Developments, Marine Gateway features direct access to Canada Line and bus transits and soon to be housing 12 cinemas, TNT supermarket, banks and more shops for your convenience. Impeccable SOUTH tower unit with amazing views of Fraser River, mountains and city. Modern & high end finishes with stainless steel appliances in the kitchen, high quality laminate floor, closets with organizers, solid surface countertops and Huge balcony for your summer bbq's! Comes with storage locker, bike locker & 1 car parking. Very bright SOUTH exposure with 270 views of River, mountains & city. Move in Ready!

KEY INFORMATION

MLS® R2007967

Residential Attached

Marpole

2 Bedrooms

2 Bathrooms

800 SF

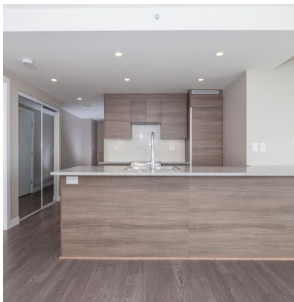
\$382.76 Maintenance Fees

FEATURES

Year Built: 2015

Views: WATER, CITY AND MOUNTAIN

Listed By: rennie & associates realty ltd.



Paul Wong PREC*
604.716.0483
pwong@rennie.com
rennie.com/paulwong

rennie