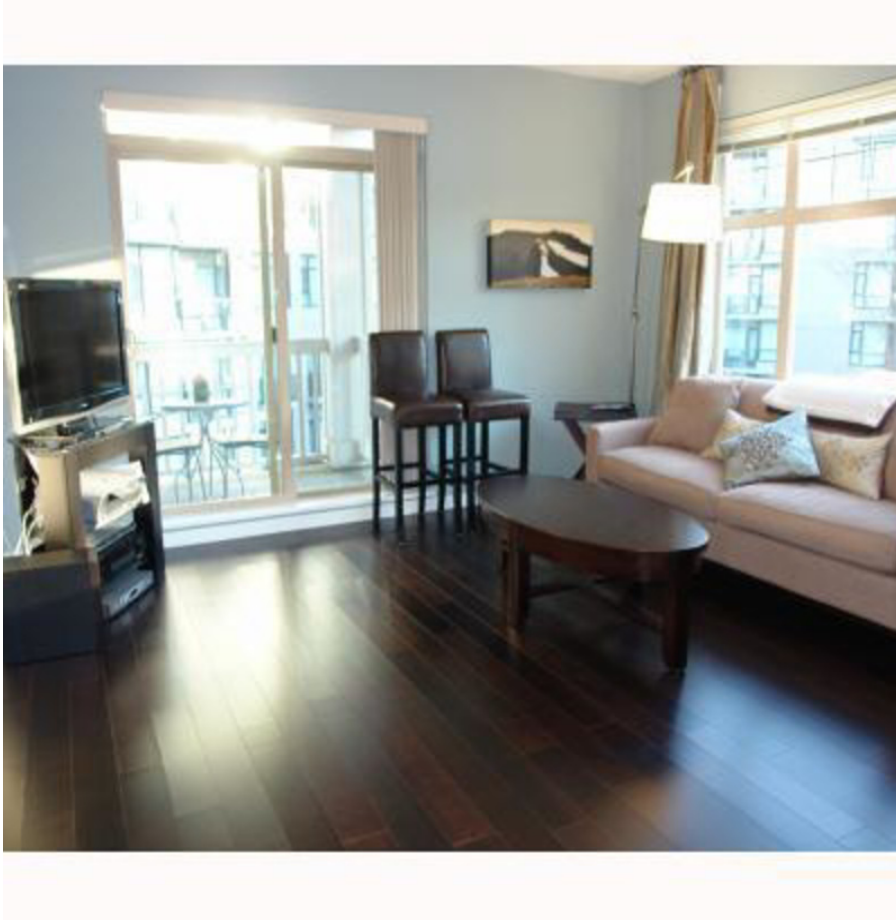


# 208 4883 Maclure Mews, Vancouver

\$599,900



Welcome to MATTHEW's HOUSE by Polygon in the Highly Sought after Neighbourhood of Quilchena Park. This meticulously maintained QUIET and SPACIOUS CORNER 2BR/2Bath Den home features an Open Kitchen, S/S Appliances, Gas F/P, H/W flooring, Designer Paint, 9' Ceilings, Bright, and a PRIVATE BALCONY perfect for entertaining amongst your views of the serene courtyard. UNBEATABLE LOCATION - steps away from vibrant shops/restaurants of Kerrisdale and Arbutus Village. Close top ranked schools: Prince of Wales, Quilchena Elementary, York House, and LFA. 2 secured parking plus 1 Storage Locker included. With Amenities such as outdoor Pool, Gym, Billiards room, meeting room and PRICED BELOW ASSESSED VALUE this one is a MUST SEE!

## KEY INFORMATION

MLS® V756612

Residential Attached

Quilchena

2 Bedrooms

2 Bathrooms

901 SF

\$300.61 Maintenance Fees

## FEATURES

Year Built: 2005

Views: SERENE COURTYARD AND GARDENS

Listed By: rennie & associates realty ltd.



**Danny Chow** PREC\*  
604.765.2469  
dchow@rennie.com  
rennie.com/dannychow



**Salina Kai** PREC\*  
604.773.7013  
skai@rennie.com  
rennie.com/salinakai

**rennie**