

# W 33rd Ave, Vancouver



Primrose is poised to become a landmark residence in Vancouver. Situated next to Queen Elizabeth Park with a west side address where Cambie and West 33rd Avenue meet, its refined architecture will serve as a prominent gateway to the Cambie Corridor. Expressive materials, expansive windows and an architectural corner detail combine to create a unique sense of place, perfectly suited to the park-side setting. Primrose consists of a wide selection of homes in two buildings separated by an open breezeway that leads into the park. The buildings are angled to greet the roadway, offering an inviting curbside presence. At a Glance \* 68 parkside residences \* 1-, 2-, 3-bedroom suites \* 8 townhouses \* retail space \* at the edge of Queen Elizabeth Park \* sweeping views \* fitness centre \* minutes from Oakridge Centre shopping \* 2- 5-10 National Home Warranty

## KEY INFORMATION

MLS®

Residential Attached

Quilchena

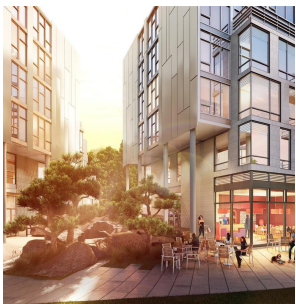
2 Bedrooms

2 Bathrooms

0 SF

## FEATURES

Listed By: rennie & associates realty ltd.



**Shelly Vellani** PREC\*

604.710.3681

svellani@rennie.com

rennie.com/shellyvellani

**rennie**