

# Ryder Hesjedal Way, Victoria

\$835,000



Royal Bay is a master-planned, waterfront community located in the Southern part of Vancouver Island. Enjoy the beach and other marine activities just steps from your home. Relax in public areas nearby, where you will find seaside restaurants, shops and services. This brand new detached home features an enclosed backyard, a spacious living space, gourmet kitchens, side-by-side washer & dryer, and much more! Also included, a double car garage + a third parking space outside. This home has an 869 sqft unfinished basement with plumbing and electrical roughed in and it's own entrance. Perfect for a potential suite or for a mortgage helper!

## KEY INFORMATION

MLS®

Residential Detached

BC

3 Bedrooms

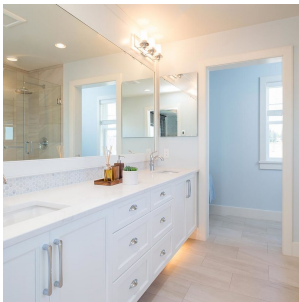
2 Bathrooms

1,925 SF



## FEATURES

Listed By: rennie & associates realty ltd.



**Tracy Lam** PREC\*  
778.688.8035  
tlam@rennie.com  
rennie.com/tracylam

**rennie**