

1603 - 9808 King George Blvd, Surrey

\$592,900



Located in the emerging Surrey City Centre, King George Hub is one of the most anticipated mixed-use communities in Metro Vancouver. Its location next to the Expo Line's King George Station provides residents with a dynamic transit-oriented neighbourhood. With 434 homes in the first offering, King George Hub offers 1 and 2 bedroom homes starting from \$299,900. Along with parks, nearby cafes, shops and services at your doorstep, homeowners will also have access to outstanding private amenities including a rooftop terrace, fitness facility, a theatre room, lounge, games rooms and much more.

KEY INFORMATION

MLS®

Residential Attached

Whalley

2 Bedrooms

2 Bathrooms

809 SF

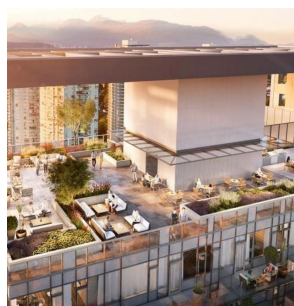
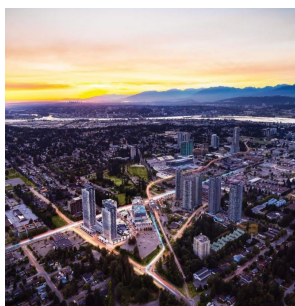


FEATURES

Year Built: 2021

Views: South - West

Listed By: rennie & associates realty ltd.



Andy Mah
604.779.9382
amah@rennie.com
rennie.com/andymah

rennie