

319 - 3530 Sawmill Crescent, Vancouver

\$1,200,900



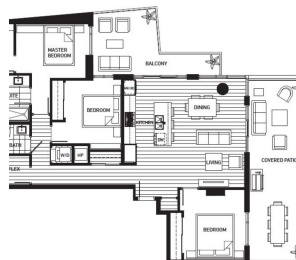
A3 features one, two, and three bedroom homes in a 25-storey tower and 6-storey midrise, along with townhomes and live-work homes. Contrasting white and dark grey brick is complemented by varied paneling to create a distinctive exterior. River District is only 25 minutes from downtown Vancouver and less than 10 minutes from Richmond and Burnaby, you can find the best value in the heart of the Lower Mainland without compromising neighbourhood and the lifestyle you love.

KEY INFORMATION

MLS®
Residential Attached
South Marine
2 Bedrooms
3 Bathrooms
1,335 SF

FEATURES

Year Built: 2021
Views: South- East
Listed By: rennie & associates realty ltd.



Andy Mah PREC*
604.779.9382
amah@rennie.com
rennie.com/andymah

rennie