

# 1704 - 9808 King George Blvd, Surrey, Bc, Surrey

\$587,900



Located in the emerging Surrey City Centre, King George Hub is one of the most anticipated mixed-use communities in Metro Vancouver. Its location next to the Expo Line's King George Station provides residents with a dynamic transit-oriented neighbourhood. With 434 homes in the first offering, King George Hub offers 1 and 2 bedroom homes starting from \$299,900. Along with parks, nearby cafes, shops and services at your doorstep, homeowners will also have access to outstanding private amenities including a rooftop terrace, fitness facility, a theatre room, lounge, games rooms and much more.

## KEY INFORMATION

MLS®

Residential Attached

Whalley

2 Bedrooms

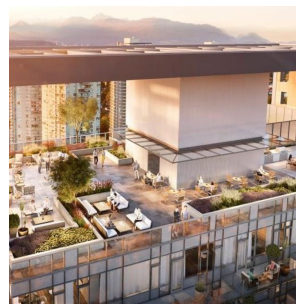
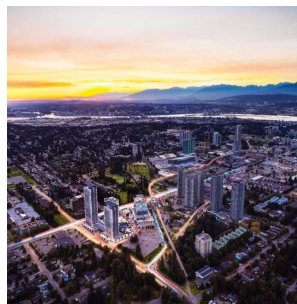
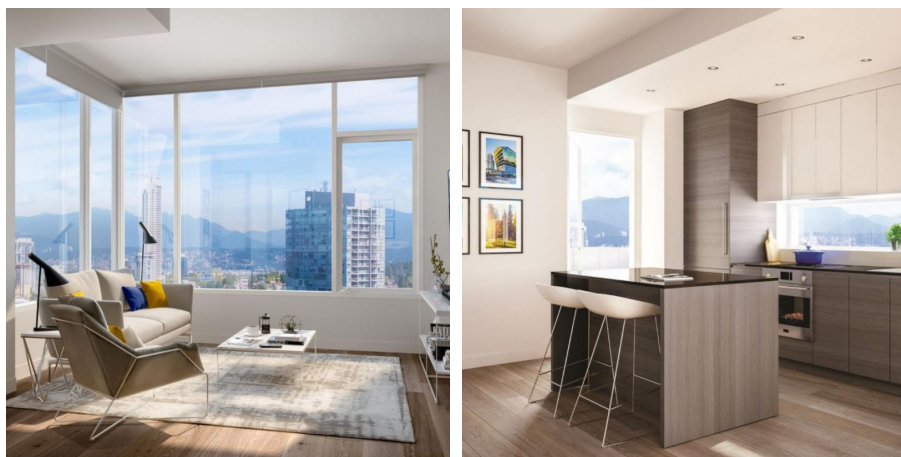
2 Bathrooms

809 SF

## FEATURES

Year Built: 2021

Listed By: rennie & associates realty ltd.



**Andy Mah** PREC\*  
604.779.9382  
amah@rennie.com  
rennie.com/andymah

**rennie**