

# #604 - 7228 Adera St, Vancouver

\$3,199,900



Adera House at Shannon Wall Centre Kerrisdale - Vancouver's best neighbourhood! Secluded behind heritage stone walls, mature trees and generous setbacks, elegant new residences and contemporary amenities intermingle with the heritage precincts. Thoughtfully connected via cobblestoned lanes, pathways and formal gardens with parks, ponds and unique places to gather and celebrate, this spectacular heritage landscape and 10-acre property allows for an abundance of fresh green space and beautiful architecture. This concrete constructed south-facing 3 bed 2.5 bath Adera House townhouse unit feature 1,784 sft of open layout with no waste of space. There are two side by side parking stalls and one locker included, and the unit has a Light color scheme. Completion is estimated Spring 2019.

## KEY INFORMATION

MLS®

Residential Attached

South Granville

3 Bedrooms

2 Bathrooms

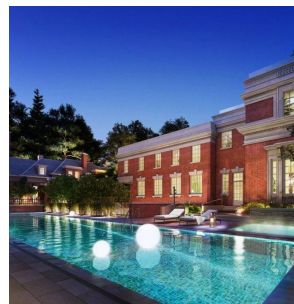
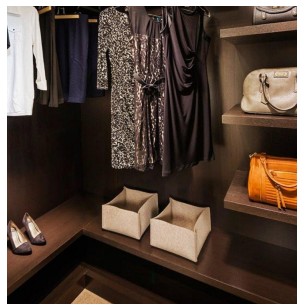
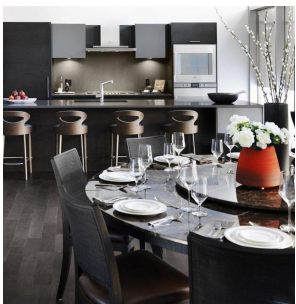
1,784 SF

\$960.00 Maintenance Fees

## FEATURES

Year Built: 2019

Listed By: rennie & associates realty ltd.



**Hanson Lu** PREC\*  
604.787.2578  
hlu@rennie.com  
rennie.com/hansonlu

**rennie**