

# 2098 Victoria Drive, Vancouver

\$898,000



Rarely does a 2 Bed + 2 Bath Victorian style home like this come to market w/ perfect porch & beautiful garden patio! PERFECTLY maintained front, corner 1/2 duplex offers spacious living/ dining room w/maple wood floors, gas f/p, faux wooden blinds & direct gorgeous vws of McSpadden Park. Sun-drenched home features a chef's kitch w/custom maple & glass cabinet doors, updated drawers, upgraded fridge, gas stove & pantry. Retreat upstairs to the TWO spacious bdrms w/soaring vaulted ceilings & 2 spa-like baths. Recently updated porch with new railings, steps & paint. Tons of storage inside and out! Fenced LARGE patio w/updated pavers. Great location, walking distance to the Drive, Queen Victoria Annex/Laura Secord Elem & Broadway Station.

## KEY INFORMATION

MLS® R2310146

Residential Attached

Grandview Woodland

2 Bedrooms

2 Bathrooms

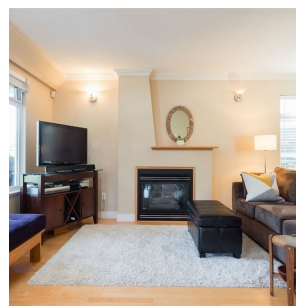
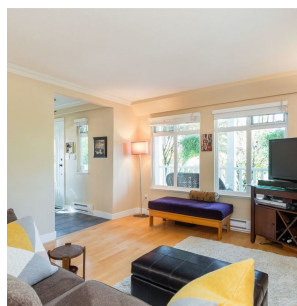
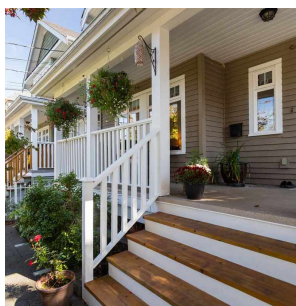
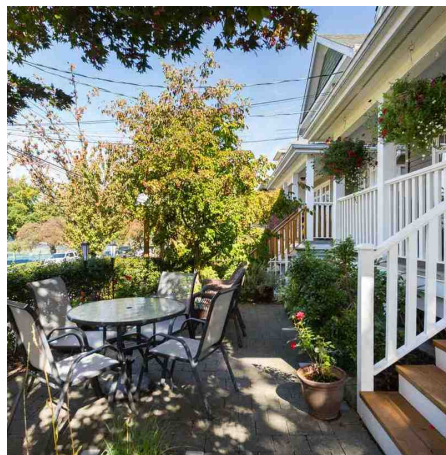
961 SF

## FEATURES

Year Built: 1999

Views: PRETTY VWS OF MCSPADDEN PARK

Listed By: rennie & associates realty ltd.



**Danny Chow** PREC\*  
604.765.2469  
dchow@rennie.com  
rennie.com/dannychow



**Salina Kai** PREC\*  
604.773.7013  
skai@rennie.com  
rennie.com/salinakai

**rennie**