

35 3368 Morrey Court, Burnaby

\$1,150,000



Strathmore Lane – The very best 4 bdrm townhouse in the quality-built complex. This is a spacious end unit with large private yard & double garage with 2 extra driveway parking. Nicely designed to optimize light with open living space. A bright gourmet kitchen, stainless steel appliances and granite countertops. Very convenient location within walking distance to Lougheed Mall, Skytrain, recreation centre and public library.

KEY INFORMATION

MLS® R2281271

Residential Attached

Sullivan Heights

4 Bedrooms

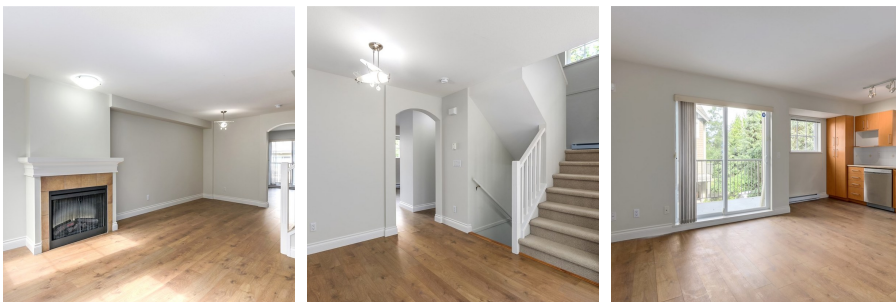
4 Bathrooms

1,526 SF

FEATURES

Year Built: 2005

Listed By: rennie & associates realty ltd.



Charlie Kim PREC*
604.767.1531
ckim@rennie.com
rennie.com/charliekim

rennie