

19356 Park Road, Pitt Meadows

\$949,900



OUTSTANDING, TOTALLY RENO'D 2316 SF, 26 yr bsmt home in sought after Pitt Meadows w/ LEGAL 2 bdrm w/out bsmt suite! Quality finishing top to bottom PLUS fabulous layout in fantastic neighbourhood-this home will not last! CHEF INSPIRED gourmet kitchen w/breakfast bar, solid painted maple cabinets, quartz counters + new SS appl up & down. Same finish & quality thru-out w/3 new bthrms w/quartz & undermount sinks, hi-end laminate & tile floors, custom lighting & window coverings & crown molding thru-out. LEGAL SUITE mom & dad would LOVE to live in. Shared laundry w/new appl! Double garage! SOUTH facing, beautifully manicured, fenced yard. Steps from parks, shopping, West Coast Express & north of tracks!

KEY INFORMATION

MLS® R2242966

Residential Detached

Mid Meadows

5 Bedrooms

3 Bathrooms

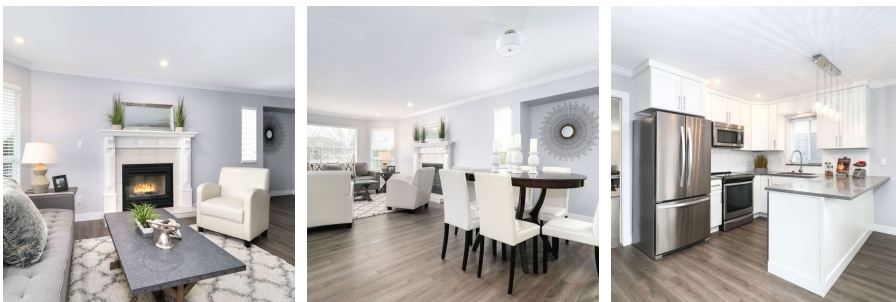
2,316 SF

5,457 SF Lot

FEATURES

Year Built: 1992

Listed By: rennie & associates realty ltd.



Deanna Lythgo PREC*
778.840.3170
dlythgo@rennie.com
rennie.com/deannalythgo

rennie