

# 201 10 Renaissance Square, New Westminster

\$498,900



Modern, Soho New York inspired 2 LEVEL LOFT in the heart of New Westminster. This 1 Bed & 2 bathroom home is one of the LARGEST and most functional one bedroom floor plans on the market. This home features 17 ft floor to ceiling windows and a brick wall feature to enjoy the charming vibe New Westminster has to offer. Featuring: A Cozy Gas Fireplace, Kohler fixtures, granite counter tops, engineered hardwood floors & stainless steel appliances. Dedicated in-suite laundry and spacious walk in closet. Includes: 1 secured parking & 1 storage locker steps away from your unit. Short walk to the Quay, Skytrain and waterfront trails along the Fraser River! Open house Sat & Sun June 23rd & 24th 11:00-1:00 pm. SEE VIRTUAL TOUR!

## KEY INFORMATION

MLS® R2281205

Residential Attached

Quay

1 Bedroom

2 Bathrooms

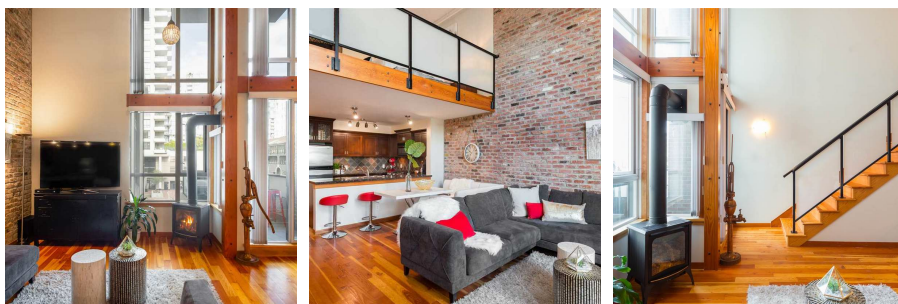
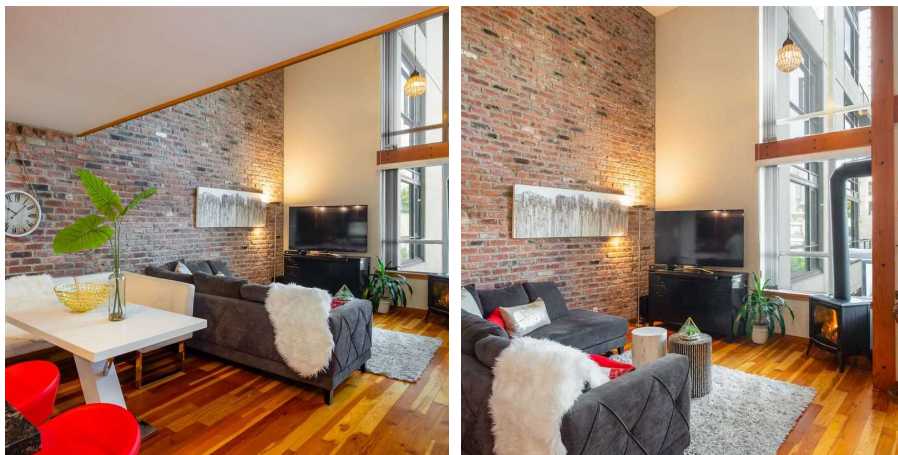
965 SF

\$348.64 Maintenance Fees

## FEATURES

Year Built: 2006

Listed By: rennie & associates realty ltd.



**Shelly Vellani** PREC\*  
604.710.3681  
svellani@rennie.com  
rennie.com/shellyvellani

**rennie**