

201 4815 Eldorado Mews, Vancouver

\$539,900



Welcome to 2300 Kingsway! Spacious 1 Bed + Den + Flex with open City Views! Very efficient open floor plan featuring laminate wood flooring in the living areas, large windows throughout, a gourmet kitchen with stone countertops & stainless steel appliance pkg & spa-like bathroom with striking floor to ceiling tiles & soaker tub. Unbeatable location mins from Downtown, Richmond, Burnaby & Metrotown for all your shopping & entertainment needs. Well managed building with access to fitness centre, outdoor terrace, games room/lounge & on-site manager for your convenience. 1 Parking & 1 Storage included. Excellent value!

KEY INFORMATION

MLS® R2244597

Residential Attached

Langley City

1 Bedroom

1 Bathroom

577 SF

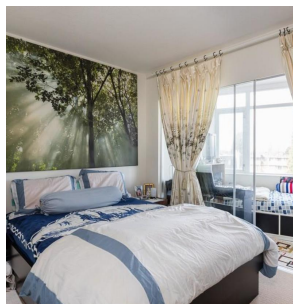
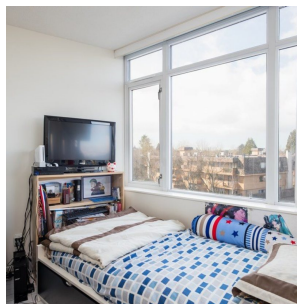
\$261.16 Maintenance Fees

FEATURES

Year Built: 2013

Views: CITY VIEWS

Listed By: rennie & associates realty ltd.



Danny Chow PREC*
604.765.2469
dchow@rennie.com
rennie.com/dannychow



Salina Kai PREC*
604.773.7013
skai@rennie.com
rennie.com/salinakai

rennie