

506 200 Nelson's Crescent, New Westminster

\$449,900



HISTORIC SAPPERTON'S NEWEST URBAN COMMUNITY The Brewery District in New Westminster. Better than new, no GST! This bright open layout 1 bedroom and 1 bath has a great functional floor plan and no wasted space. Enjoy your morning coffee on the 100 sq.ft balcony. Great location everything you need right at your door step. Cafes, /Starbucks, restaurants, grocery, pharmacy, bank... Get anywhere in 20 minutes, walking distance to Sapperton Skytrain and 25 minute drive to Vancouver via Highway 1. Smartest buy around, an established walk-to-everything community. **OPEN HOUSE CANCELLED**

KEY INFORMATION

MLS® R2245563

Residential Attached

Sapperton

1 Bedroom

1 Bathroom

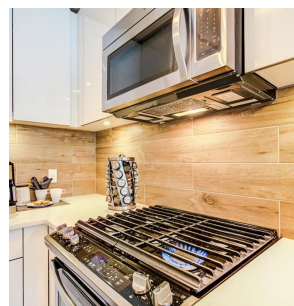
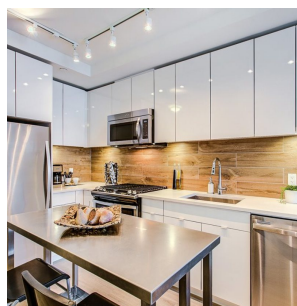
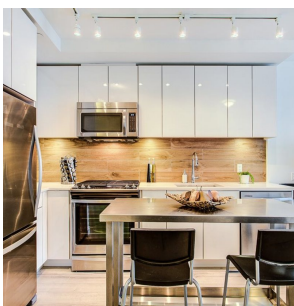
515 SF

\$206.83 Maintenance Fees

FEATURES

Year Built: 2017

Listed By: rennie & associates realty ltd.



Ryan O'Hearn PREC*
778.384.2667
rohearn@rennie.com
rennie.com/ryanohearn

rennie