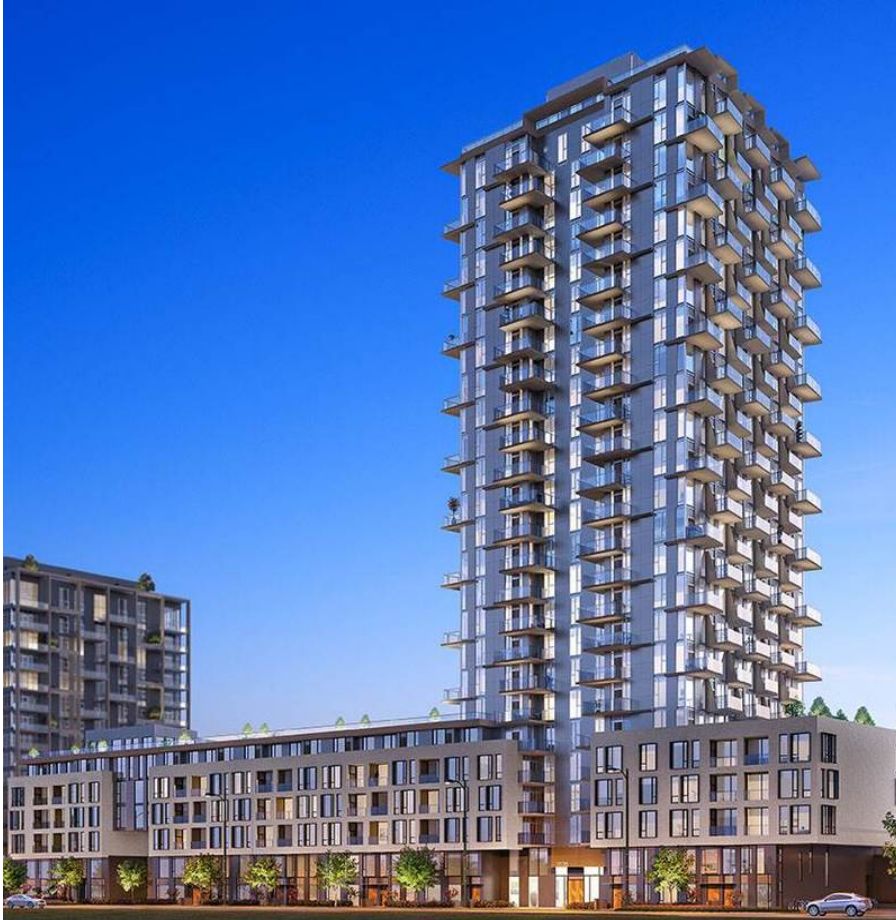


H1500 3530 Sawmill Crescent, Vancouver

\$615,900



This 1 bdrm + flex bath home is located in River District's (RD) new Avalon 3 (AP3) community. RD's tallest concrete building. Equipped w/ premium appliances: fully integrated fridge & dishwasher, gas range, glass backsplash, wall oven & built-in microwave, w/upgraded interior finishes - these homes soar by comparison. AP3 also offers enviable access to Town Centre retailers & lush green space along w/outstanding onsite amenities including rooftop pool & hot tub, daytime concierge, 20,000 SF community courtyard. AP3's homes truly raise the bar w/RD's best views & upgraded features. Come see the elevated lifestyle you could be living, still at Vancouver's absolute best value. Sales Centre open daily 12-5pm. Move in late Summer 2021.

KEY INFORMATION

MLS® R2246303

Residential Attached

South Marine

1 Bedroom

1 Bathroom

610 SF

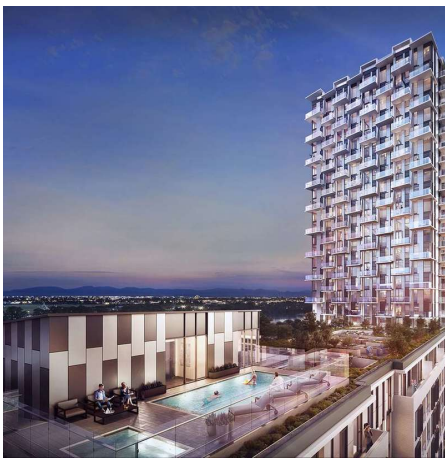
\$245.96 Maintenance Fees

FEATURES

Year Built: 2021

Views: RIVER VIEW

Listed By: rennie & associates realty ltd.



Salina Kai PREC*
604.773.7013
skai@rennie.com
rennie.com/salinakai

rennie