

1608 488 Sw Marine Drive, Vancouver

\$469,800



Marine Gateway, Vancouver's premiere energy centre with all your daily necessities at your door step. This large 1 BED features a luxurious Blomberg kitchen appliance package, with quartz counters, integrated microwave, and sleek hoodfan. The lavish bathroom has ample storage space with contemporary finishings. Wide plank laminate floors create a seamless open feel to this home. Views from this home of the city, river, and Mt. Baker are breathtaking. Built along the Canada Line, Marine Gateway provides you with easy transportation leaving no need for a car. Open House March 4, 2017, 2-4 pm. Subjects removed

KEY INFORMATION

MLS® R2142026

Residential Attached

Marpole

1 Bedroom

1 Bathroom

502 SF

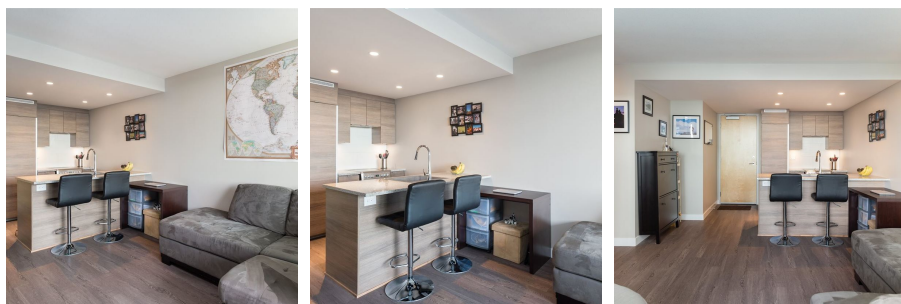
\$237.93 Maintenance Fees

FEATURES

Year Built: 2016

Views: RIVER, CITY, MOUNTAIN

Listed By: rennie & associates realty ltd.



Nagib Karim PREC*
604.999.5887
nkarim@rennie.com
rennie.com/nagibkarim

rennie