

210 2333 Clark Drive, Vancouver

\$749,800



Extensively renovated, 2 floor unit that feels like a townhome and offers over 1100 sqft of living space, this tastefully updated unit offers everything you are looking for! No expense was spared in updating this centrally located condo, boasting marble fireplace, glass railings, floating stairs leading up to your own rooftop deck with incredible downtown and mountain views! Brand new stainless steel kitchen appliances, contemporary counters and backsplash, laminate floors and new doors and light fixtures. You're only a block from Skytrain, 5 mins to downtown, minutes to the vibrant Commercial Drive and VCC is steps away. Dont' wait long on this one!

KEY INFORMATION

MLS® R2142131

Residential Attached

Mount Pleasant

2 Bedrooms

2 Bathrooms

1,131 SF

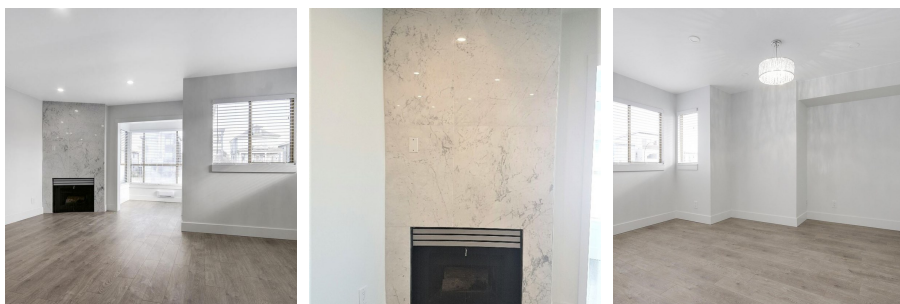
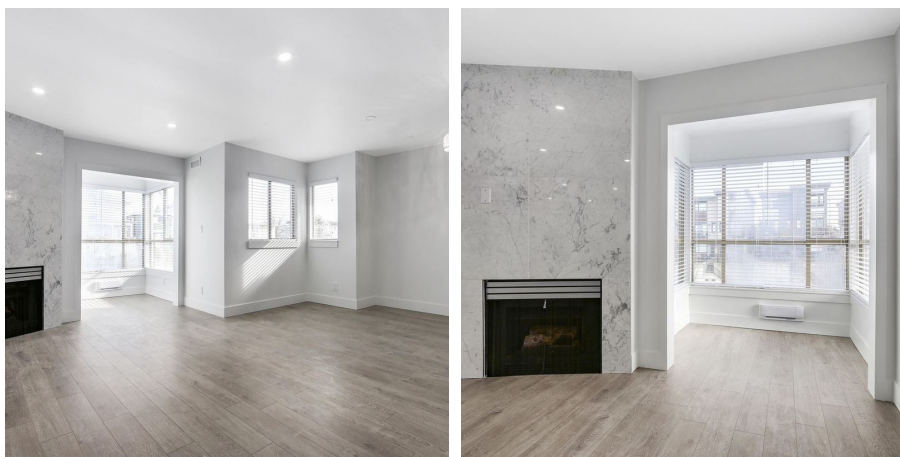
\$308.00 Maintenance Fees

FEATURES

Year Built: 1991

Views: ROOFTOP DECK 360 CITY/MOUNTAIN

Listed By: rennie & associates realty ltd.



Vivien Ma PREC*
604.828.2268
vma@rennie.com
rennie.com/vivienma

rennie