

# 608 258 Nelson's Crescent, New Westminster

\$315,900



The Columbia is the latest addition to Brewery District, an established walk-to-everything community located right on rapid transit. This 1 bed, 1 bath South facing home is efficiently laid out with 540sqft of living space. Homes feature open layouts with quality finishes including a KitchenAid gas range, AEG hood fan, quartz counters and Kohler faucets. Additional features include a spacious bedroom, large walk-in-closet and a linen closet. Includes access to 10,000+sqft of private indoor amenities at Club Central. The Presentation Centre is located at 258 Nelson's Court in New Westminster and we are open daily 12-5pm, including Friday.

## KEY INFORMATION

MLS® R2142403

Residential Attached

Sapperton

1 Bedroom

1 Bathroom

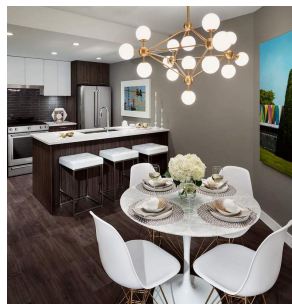
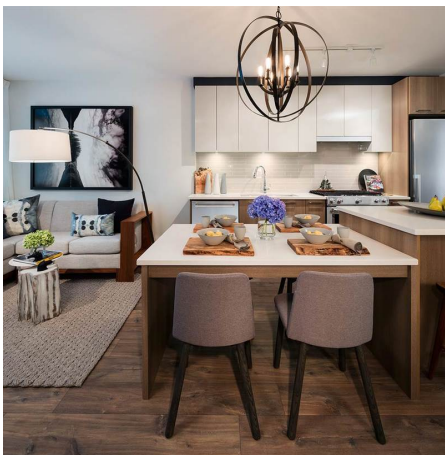
540 SF

\$204.70 Maintenance Fees

## FEATURES

Year Built: 2019

Listed By: rennie & associates realty ltd.



**Salina Kai** PREC\*  
604.773.7013  
skai@rennie.com  
rennie.com/salinakai

**rennie**