

139 2000 Panorama Drive, Port Moody

\$899,000



Mountain's Edge Townhomes with best location in Heritage Woods! Open Concept Very Bright South Facing Unit with high Vaulted Entry, Real Maple Cabinetry in Kitchen with upgraded faucets. Stainless appliances, Granite Counters, Pantry, Gas Fireplace and engineered hardwood floor to upstairs and basement. 4 Bedrooms and 4 Washrooms with daylight bright basement with large recreation room. Nice size of patio and deck. Security System, Central Vacuum System, New Hot Water Tank. Steps to Aspenwood Elementary, Kinder Kampus Daycare, Eagle Mountain Middle, Heritage High School, Community Centre, Bike Trails and Trails.

KEY INFORMATION

MLS® R2144884

Residential Attached

Heritage Woods

4 Bedrooms

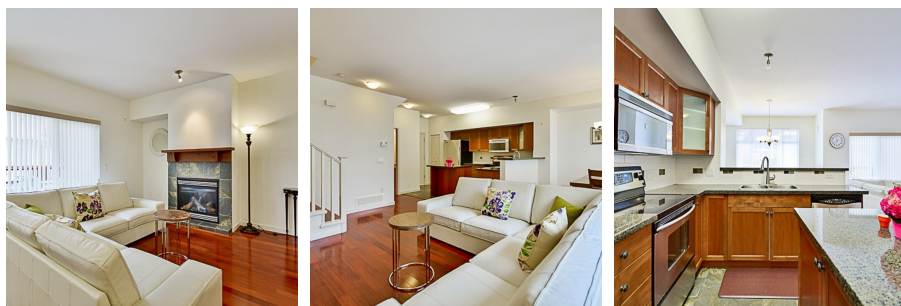
4 Bathrooms

2,040 SF

FEATURES

Year Built: 2004

Listed By: rennie & associates realty ltd.



Jordan Wong
778.378.6888
jwong@rennie.com
rennie.com/jordanwong

rennie