

1009 68 Smithe Street, Vancouver

\$1,198,000



Rarely available stunning 09 suite. Wrap around views of city, false creek and coopers park, from this luxurious 2 Bedroom, 2 Bathroom and Den Residence. Elegant upgraded premium package with engineered hardwood flooring, over-height 9' ceilings integrated kitchen with top of the line Miele appliances, marble bathroom & air conditioning. Enjoy 5 star resort style amenities with concierge, outdoor pool, hot tub catering kitchen with ground dining hall and much more. Steps to Seawall marina, urban fare groceries, coopers park, Yaletown shopping and restaurants. 2 SIDE BY SIDE PARKINGS and 1 STORAGE LOCKER with this incredible package.

KEY INFORMATION

MLS® R2149032

Residential Attached

Yaletown

2 Bedrooms

2 Bathrooms

998 SF

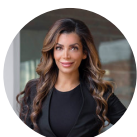
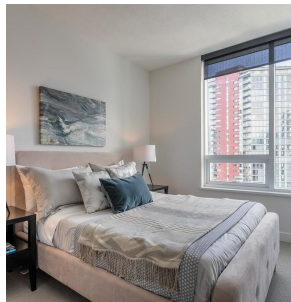
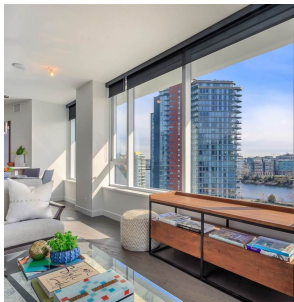
\$412.76 Maintenance Fees

FEATURES

Year Built: 2016

Views: Breathtaking FalseCreek& Water

Listed By: rennie & associates realty ltd.



Tina Baloochestany PREC*
778.987.3697
tbaloochestany@rennie.com
rennie.com/tinabaloochestany

rennie