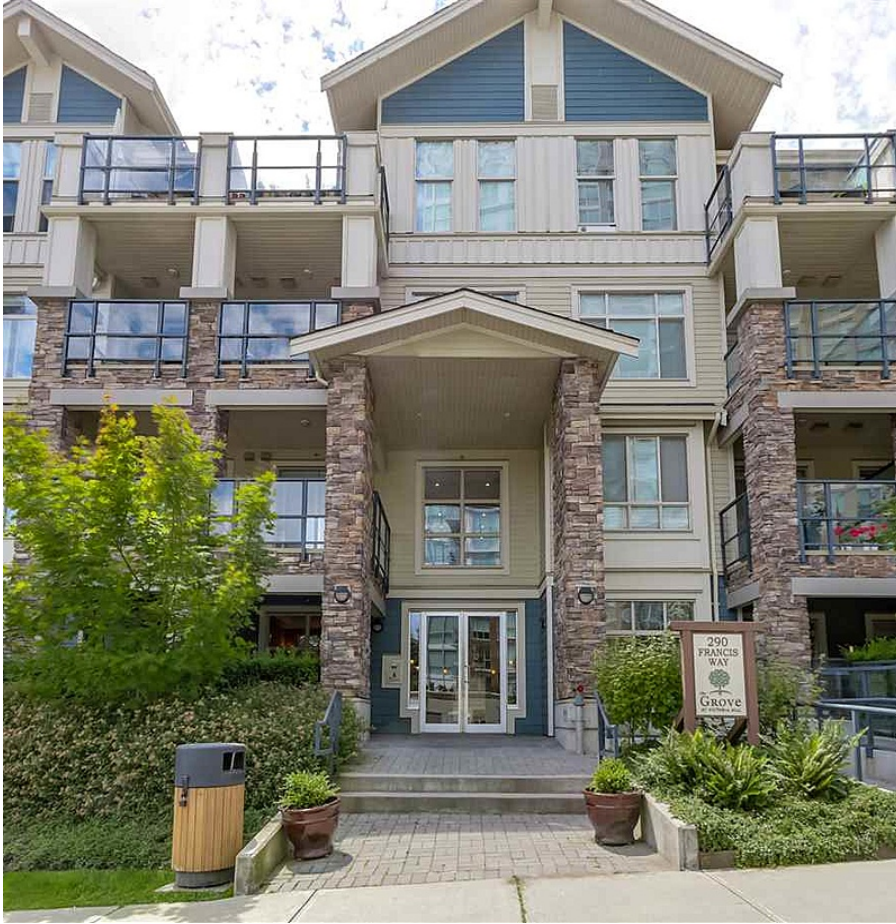


308 290 Francis Way, New Westminster

\$429,000



The Grove at Victoria Hill - Beautiful modern low-rise condo surrounded by century old trees. 2 bed + 2 bath, 956 sq.ft., spacious open layout. It offers privacy with two separate bedroom. Master bedroom has walk through closet to a full bathroom. Gourmet kitchen with stainless steel appliances, lots of storage space. Amenities at the Boiler House: gym, theatre, study, party room/ lounge, outdoor court. Central locations, steps to Queen Park, walking distance to Skytrain and bus. Convenient location. It is close to all major thoroughfares including Highway 91, Canada Way, Columbia Street. OpenHouse July 3rd Sunday 2-4pm

KEY INFORMATION

MLS® R2085130

Residential Attached

Fraserview

2 Bedrooms

2 Bathrooms

956 SF

\$348.93 Maintenance Fees

FEATURES

Year Built: 2008

Views: GARDEN VIEW

Listed By: rennie & associates realty ltd.



Charlie Kim PREC*
604.767.1531
ckim@rennie.com
rennie.com/charliekim

rennie