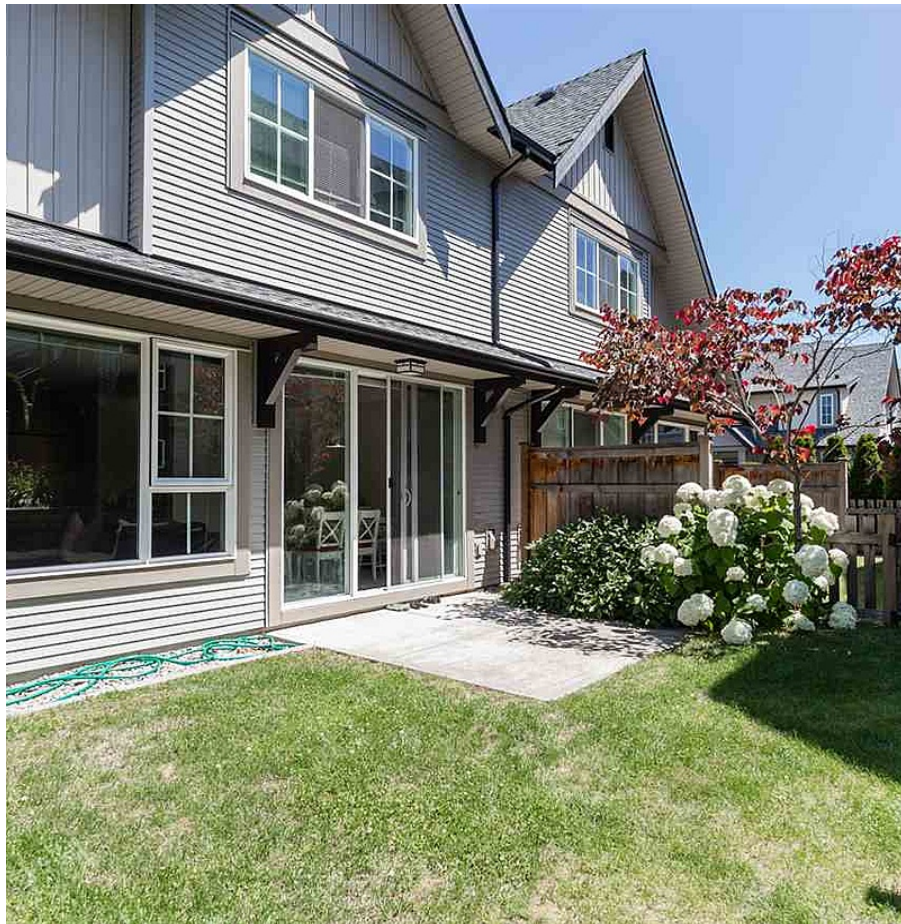


141 2501 161a Street, Surrey

\$688,000



Showcasing 3 bedrooms & 3 bathrooms, this bright & spacious townhome at Grandview's elite HIGHLAND PARK provides an effortless lifestyle. Seamlessly laid out over 1840 sq.ft. the chef's kitchen & open concept entertaining area creates the perfect setting for hosting friends & family. Upstairs boasts 2 bedrooms with ample space for king size beds, as well as a generous master bedroom featuring an expansive walk-in closet & spa-like en-suite. With a private 2 car garage & secluded backyard, this townhome offers all the externalities of a detached house. Open house Sat & Sun July 9th and 10th 12-2pm.

KEY INFORMATION

MLS® R2087847

Residential Attached

Grandview Surrey

3 Bedrooms

3 Bathrooms

1,844 SF

FEATURES

Year Built: 2010

Views: MOUNTAIN VIEW FROM TOP FLOOR

Listed By: rennie & associates realty ltd.



Matthew Argent

604.313.0103

margent@rennie.com

rennie.com/matthewargent

rennie