

# 702 Guiltner Street, Coquitlam

\$1,788,000



Gorgeous house in West Coquitlam. Very convenient location to Mountainview Elementary School, Banting Middle School and Evergreen Skytrain Station. Well maintained by the first owners. Upper deck was extended with permit. Basement Entry style house with Upstairs with four bedrooms and lots of wide open space and Downstairs with authorized two bedroom suite, a great mortgage helper! Located just across the school and park! A must see!

## KEY INFORMATION

MLS® R2249205

Residential Detached

Coquitlam West

7 Bedrooms

5 Bathrooms

3,767 SF

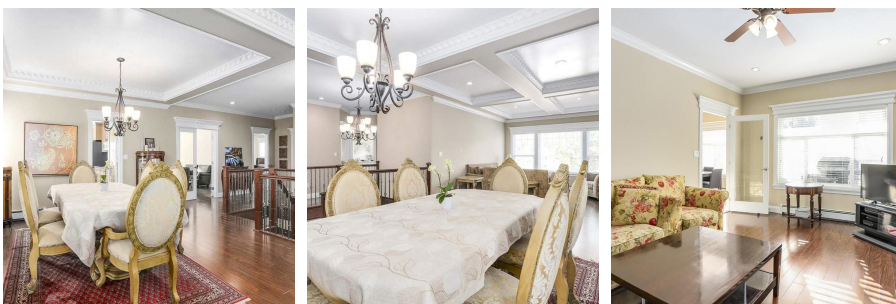
6,352 SF Lot

## FEATURES

Year Built: 2008

Views: PARK

Listed By: rennie & associates realty ltd.



**Charlie Kim** PREC\*  
604.767.1531  
ckim@rennie.com  
rennie.com/charliekim

**rennie**