

# 2304 10777 University Drive, Surrey

\$538,000



RARE 23rd floor unit under the Sub-Penthouse has NEVER been rented out. This bright and spacious South-West facing Corner unit has unobstructed views of the Fraser River, North mountains, City & Gulf Islands. The Parks provide protection for the views. 2 bedroom & den with 2 full bathrooms. Open concept Living/Dining & Quality finishings in the kitchen with quartz countertops, floor to ceiling windows throughout. Includes 1 secured parking stall & 1 storage locker. In-suite Laundry washer & dryer. Directly across the street from Gateway SKYTRAIN station, walking distance to SFU, City Hall, Surrey Central Shopping Centre & close to major trans routes. Rentals allowed & Wheelchair friendly. Schedule a viewing today!

## KEY INFORMATION

MLS® R2305566

Residential Attached

Whalley

2 Bedrooms

2 Bathrooms

750 SF

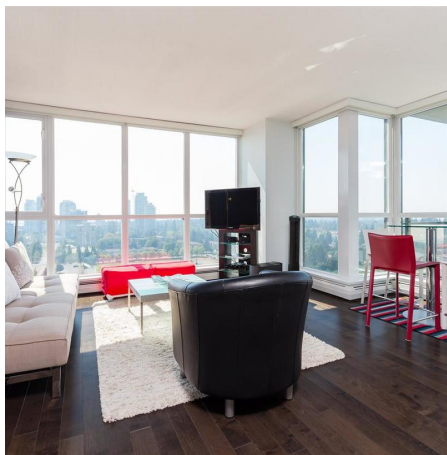
\$365.00 Maintenance Fees

## FEATURES

Year Built: 2010

Views: Fraser River/North Shore/City

Listed By: rennie & associates realty ltd.



**Simon Lai** PREC\*  
778.881.3603  
slai@rennie.com  
rennie.com/simonlai

**rennie**