

1402 7235 Salisbury Avenue, Burnaby

\$499,900



Located in the center of Highgate Village. Steps to shopping and few minutes walk to Skytrain station. This updated, modern 2 bed, 1 bath, top floor east facing unit overlooks the fantastic view of Fraser valley and city!! Spacious living rm / dining room, in suite laundry. Hot Water included in Maintenance. Underground parking and storage, plenty of visitor parking, Resident caretaker. NO PETS/RENTALS. Move-in Anytime!! Open House September 16th, 2-4PM

KEY INFORMATION

MLS® R2297339

Residential Attached

Highgate

2 Bedrooms

1 Bathroom

892 SF

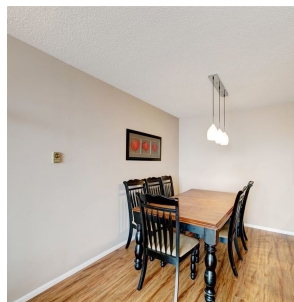
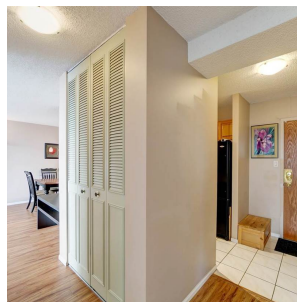
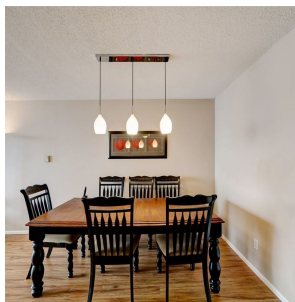
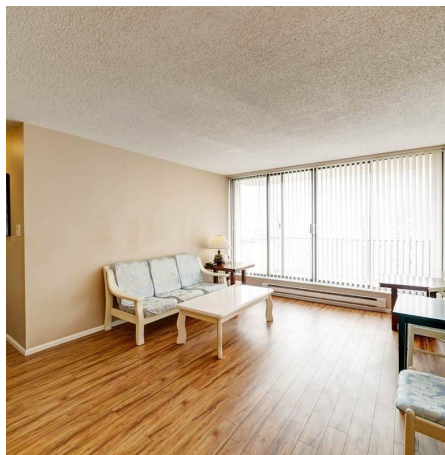
\$236.52 Maintenance Fees

FEATURES

Year Built: 1982

Views: CITY AND MOUNTAIN

Listed By: rennie & associates realty ltd.



Hanson Lu PREC*
604.787.2578
hlu@rennie.com
rennie.com/hansonlu

rennie