

1020 Mountain Highway, North Vancouver

\$1,279,000



STUNNING fully renovated 3 bed home with generous den 11'10 x 8 (currently used as a 4th bedroom) situated on a greenbelt close to Lynn Creek and the trails. This house boasts beautiful vinyl wide plank oak floors, gas fireplace with ledge stone surround, French doors from the master bedroom and living room leading onto a large 620 SF sundeck and private garden with your own treehouse. Updates include caesarstone countertops, new SS appliances and gas range, tiled bathrooms & underfloor heating, windows, exterior and interior doors, vinyl flooring, fireplace, furnace & tankless HW, murphy bed. Hikers this is ideal with trails on your doorstep, close to schools, Lynn Valley Centre, Park and Tilford, access to transit and HW1. Open house Sat 26th May 2.30-4pm.

KEY INFORMATION

MLS® R2253402

Residential Detached

Westlynn

3 Bedrooms

2 Bathrooms

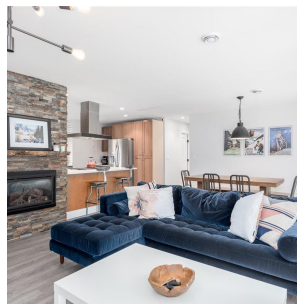
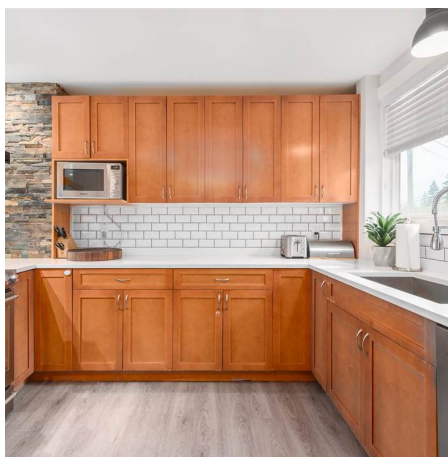
1,419 SF

7,700 SF Lot

FEATURES

Year Built: 1955

Listed By: rennie & associates realty ltd.



Sara Beikoghli
778.680.8685
sbeikoghli@rennie.com
rennie.com/sarabeikoghli

rennie