

3183 Newberry Street, Port Coquitlam

\$878,800



This Port Coquitlam home is on one of Birchland Manors largest lots with a lot size of 8804 square feet and is also on a corner with side and rear access to the property. There are 3 bedrooms upstairs and a possible 4th bedroom on the lower level in the recreation room. Open House Aug 19/20 Saturday and Sunday at 2-4 pm

KEY INFORMATION

MLS® R2196750

Residential Detached

Birchland Manor

3 Bedrooms

2 Bathrooms

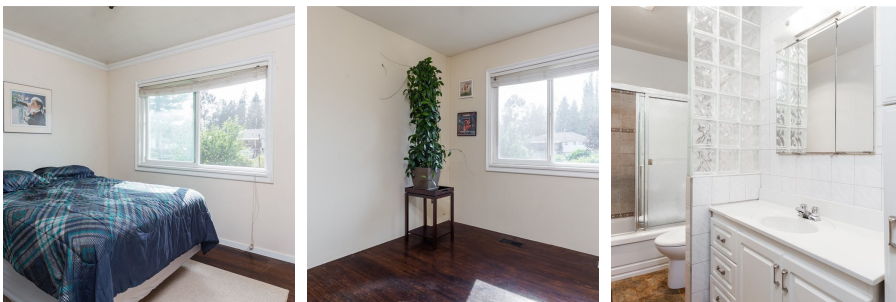
1,979 SF

8,804 SF Lot

FEATURES

Year Built: 1962

Listed By: rennie & associates realty ltd.



Chase Brettoner

604.785.8121

cbrettoner@rennie.com

rennie.com/chasebrettoner

rennie