

19558 Hoffmann Way, Pitt Meadows

\$939,000



Welcome home! Rarely available on the market, this Georgian Style 2 storey home boasts 4 HUGE bedrooms, 3 bathrooms and a large den on the main. Located in popular SAWYERS LANDING and within walking distance to Osprey Village, Pitt Meadows Athletic Park, Fraser River, playgrounds, walking trails, coffee shops and Montessori preschool. Main floor features private den with french doors, soaring ceilings in the dining room, open kitchen to the living room, tons of light and windows, plus double sided gas fireplace that adjoins the living room and dining room. Enjoy the peace and quiet in your oversized master bedroom with separate sitting area, WIC and ensuite. The fully fenced yard is private and low maintenance. Bonus: 4 ft. crawl space for storage.

KEY INFORMATION

MLS® R2197626

Residential Detached

South Meadows

4 Bedrooms

3 Bathrooms

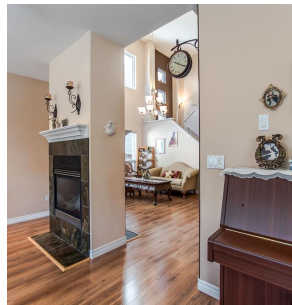
2,427 SF

3,950 SF Lot

FEATURES

Year Built: 2006

Listed By: rennie & associates realty ltd.



Phil Chang PREC*
604.754.6678
pchang@rennie.com
rennie.com/philchang

rennie