

10588 Shaw Street, Mission

\$1,399,000



Feel like you are on Vacation Every Day! 3000 Sqft LOG home. Crafted by Artisan Homes building from Osaka to Italy & back. Beautiful views of valley & hills in distance. 4.49 Acres of manicured grounds & impressive gate entry. Kitchen recently remodeled, Beautiful SS appliances incld trash compactor. Modern historic Heartland Gas stove/ Convection Oven is a show stopper! Sky Lights, mean Natural light! Morning coffee & a teaspoon of sun on the Master Suite balcony? Master is a dream, soaker tub & custom wardrobe. Great Room is Cozy yet Spacious, ft. more views & yet another balcony. Daylight Walkout Bsmt fts. Lrg Bdrm/ensuite, unfinished MAN CAVE - sauna, work bench & dbl car size doors to outside. 2 yr old DEEP Drilled well 245' UV light/softener/ pump. Auto Start generator for any outage!

KEY INFORMATION

MLS® R2180852

Residential Detached

Mission West

2 Bedrooms

3 Bathrooms

2,902 SF

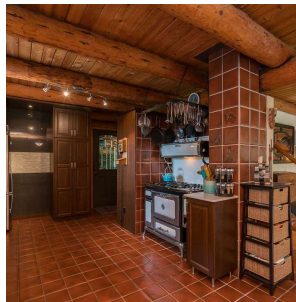
195,976 SF Lot

FEATURES

Year Built: 1980

Views: VALLEY AND MOUNTAINS

Listed By: rennie & associates realty ltd.



Simon Lai PREC*
778.881.3603
slai@rennie.com
rennie.com/simonlai

rennie