

317 46150 Bole Avenue, Chilliwack

\$284,500



Newmark!! Vacant for immediate possession. Nice size and layout with this two bedroom, two bathroom condo, open floor plan. Ideal for first time buyer. This south facing condo has good size bedrooms, nice den off master and full bathroom. Kitchen is open and lots of cabinets with eating bar. Living room opens to balcony with southern views, sun. Master bedroom has nice size closet and full bathroom

KEY INFORMATION

MLS® R2295176

Residential Attached

Chilliwack

2 Bedrooms

2 Bathrooms

865 SF

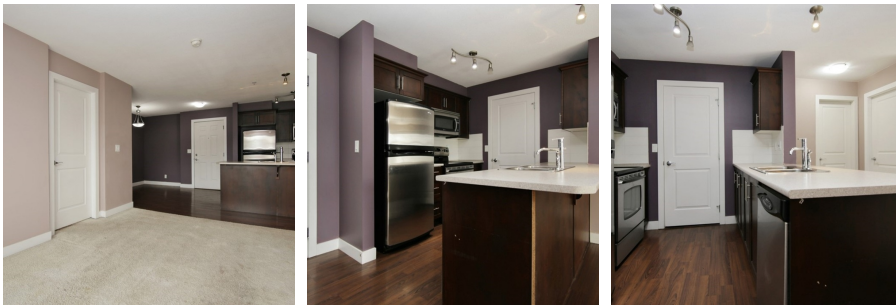
\$301.61 Maintenance Fees

FEATURES

Year Built: 2008

Views: Beautiful Mountains

Listed By: rennie & associates realty ltd.



Clarke Mallory PREC*
604.316.9917
cmallory@rennie.com
rennie.com/clarkemallory

rennie