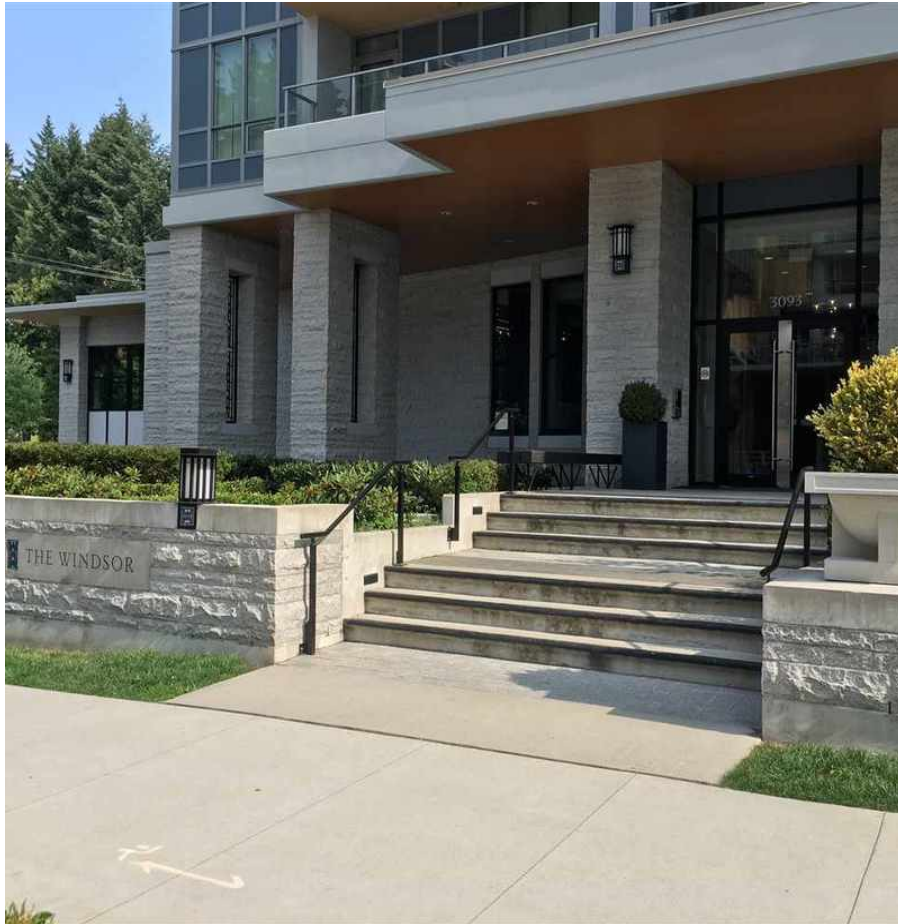


903 3093 Windsor Gate, Coquitlam

\$599,000



The Windsor by Polygon, a collection of exclusive high-rise residences in Coquitlam's most sought after master plan community of Windsor Gate. It is a collection of two-bedroom homes with views of the surrounding mountains and neighbouring Glen Park showcasing bright open plans and premium finishing. The Windsor is conveniently close to the Evergreen Line, Coquitlam Centre and lively cultural venues, recreation facilities, aquatic center, library, town center park and city hall. Homes at The Windsor include membership to the impressive Nakoma Club, Windsor Gate's private clubhouse featuring over 18,000 square-feet of resort-style amenities.

KEY INFORMATION

MLS® R2293693

Residential Attached

New Horizons

2 Bedrooms

2 Bathrooms

920 SF

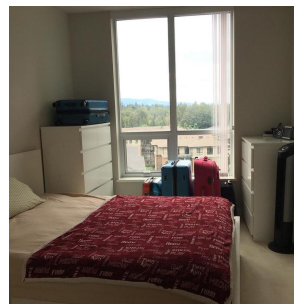
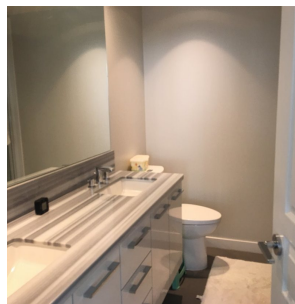
\$264.41 Maintenance Fees

FEATURES

Year Built: 2016

Views: MOUNTAIN

Listed By: rennie & associates realty ltd.



Ryan O'Hearn PREC*
778.384.2667
rohearn@rennie.com
rennie.com/ryanohearn

rennie