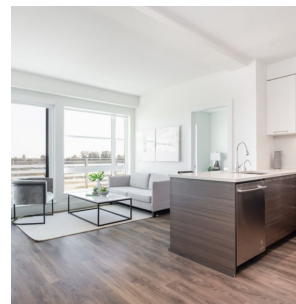
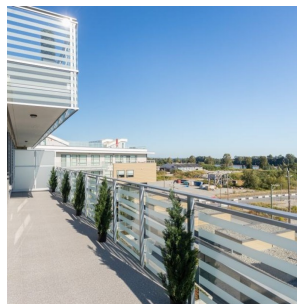
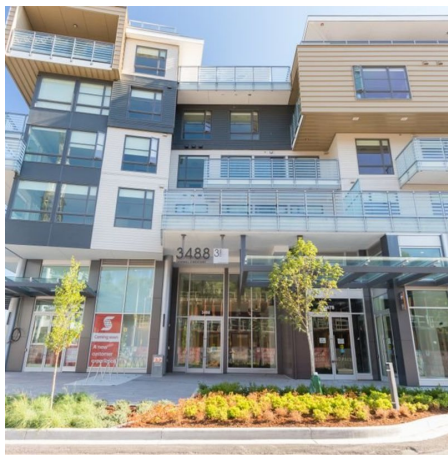


703 3488 Sawmill Crescent, Vancouver

\$828,000



Newly completed Penthouse 2 Bed/2 Bath + Flex with Massive Rooftop (over 1,000 sq.ft). Open Concept contemporary interiors, radiant heated floors, sleek roller shades covering low E glass windows w/Panoramic Fraser River view. Stainless Steel appliance package and on demand hot water dispenser. An inner staircase leading up to the private entertainers paradise deck with incredible unobstructed water view. Built Green Gold design architecture, landscaped courtyard and community garden designed to make life enjoyable here. 14,000 sq ft fitness and aquatic amenity centre is for the exclusive use of the residents with pool, hot tub, sauna/steam, squash court, yoga studio, entertainment lounge. 2 parking spaces included!

KEY INFORMATION

MLS® R2291713

Residential Attached

South Marine

2 Bedrooms

2 Bathrooms

826 SF

\$383.55 Maintenance Fees

FEATURES

Year Built: 2018

Views: PANORAMIC FRASER RIVER VIEW

Listed By: rennie & associates realty ltd.



Brandon Price PREC*
604.765.9555
bprice@rennie.com
rennie.com/brandanprice

rennie