

105 160 E 19th Street, North Vancouver

\$548,000



Immaculate 2 bdrm sunny south facing suite. Updated in 2016. Offers an unbelievable 200 SF covered balcony, rooftop deck & insuite laundry. Short walk to all amenities. The Chateau Pacific is pet friendly & well managed with a newer roof (2010), boiler (2011), fire safety upgrades (2015) & more. Quiet location, yet very conveniently located a block from Lonsdale shops, restaurants & transit. Parking 29. Locker 105. Easy to show!

KEY INFORMATION

MLS® R2279109

Residential Attached

Central Lonsdale

2 Bedrooms

1 Bathroom

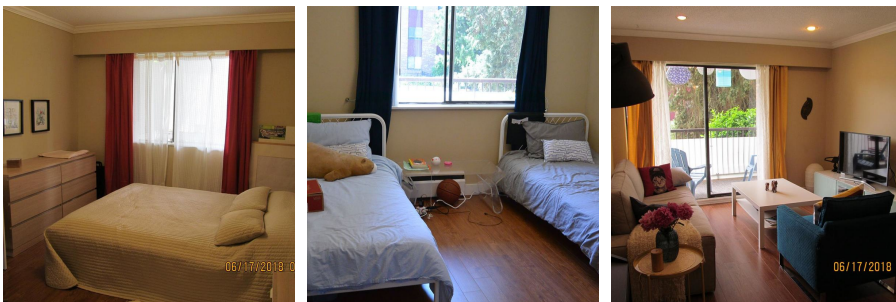
861 SF

\$441.26 Maintenance Fees

FEATURES

Year Built: 1968

Listed By: rennie & associates realty ltd.



Salina Kai PREC*
604.773.7013
skai@rennie.com
rennie.com/salinakai

rennie