

# 2601 63 Keefer Place, Vancouver

\$599,900



**SUB PENTHOUSE AT THE EUROPA** - This stunning 1 bed unit Features: Floor to ceiling windows, Open concept kitchen, laminate floors, Amazing views and Vancouver's most elusive feature - air conditioning! Located right in the heart of Tinseltown/Crosstown you are in the heart of it all. Grocery stores, coffee shops, pharmacies, parks, the sea wall, Rogers arena, downtown, False Creek, sky train are all right outside your front door - and the list goes on. Amenities include your own pool and hot tub, gym, common patio space, bike storage and concierge. Rental and pets allowed. 1 Parking stall and 1 storage locker included.

## KEY INFORMATION

MLS® R2257687

Residential Attached

Downtown

1 Bedroom

1 Bathroom

570 SF

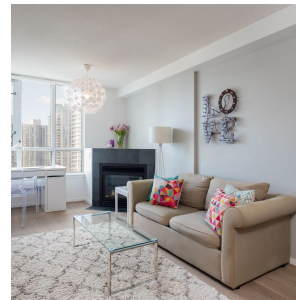
\$340.69 Maintenance Fees

## FEATURES

Year Built: 2000

Views: AMAZING CITY VIEWS

Listed By: rennie & associates realty ltd.



**Calvin Kan** PREC\*  
604.616.8373  
ckan@rennie.com  
rennie.com/calvinkan

**rennie**