

# 301 2488 Welcher Avenue, Port Coquitlam

\$529,900



What features make this the most sought after layout in Riverside at Gates Park? Very bright & quiet corner unit w/ tons of windows for natural light; very spacious & open layout (1,153 sqft!); huge kitchen w/ granite counters & tons of cabinet space; overheight ceilings throughout (8'11); freshly renovated w/ beautiful rich laminate floors & new paint; LARGE master suite complete w/ walk-in-closet & 4-pc ensuite; 2 large balconies to entertain & enjoy during the warm summer evenings; and 2 parking stalls! Directly across from PoCo's best park - Gates Park - perfect place to take the kids or pets to. A quick walk or drive to the West Coast Express, PoCo Rec Complex, Costco, Walmart & all the shops of Downtown PoCo! Perfect for 1st time buyers! OPEN HOUSE: Sat/Sun, Apr 14th/15th, 3-5pm.

## KEY INFORMATION

MLS® R2256008

Residential Attached

Central Port Coquitlam

2 Bedrooms

2 Bathrooms

1,153 SF

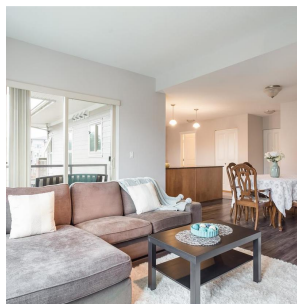
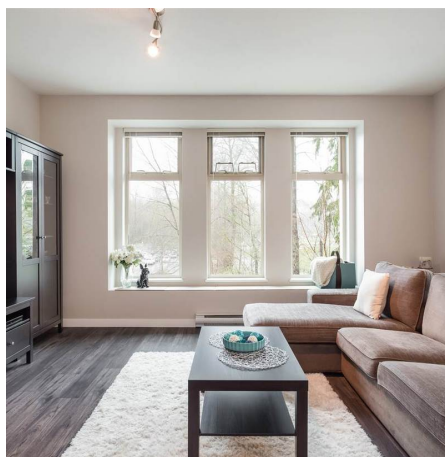
\$334.19 Maintenance Fees

## FEATURES

Year Built: 2006

Views: GATES PARK

Listed By: rennie & associates realty ltd.



**Jordan Wong**  
778.378.6888  
jwong@rennie.com  
rennie.com/jordanwong

**rennie**