

6528 Arbutus Street, Vancouver

\$1,679,000



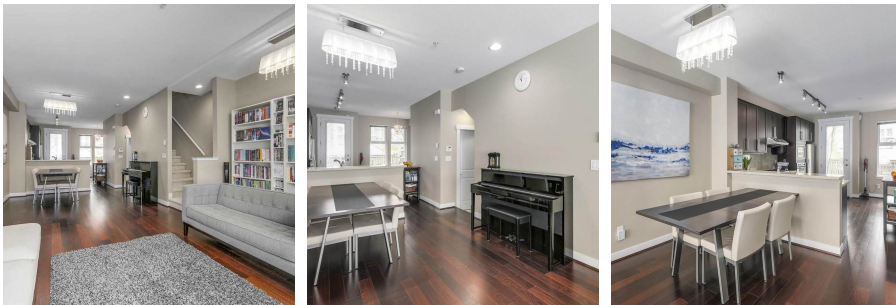
Polygon's BANNISTER MEWS in prime location in Kerrisdale. Luxurious 3 bedroom 2.5 bathroom 3 level townhouse with functional plan features H/W flooring on the main level with large living, dining, nook and open gourmet kitchen. High-end S/S appliances, granite countertop, direct access to your large 16' x 13' private patio/garden. Convenient & quiet location, close to Magee Secondary School, Maple Grove Elementary, Crofton House Private School, recreation centre, shopping & transit. A must see.

KEY INFORMATION

MLS® R2249191
Residential Attached
South West Marine
3 Bedrooms
3 Bathrooms
1,371 SF

FEATURES

Year Built: 2007
Views: TREES
Listed By: rennie & associates realty ltd.



Charlie Kim PREC*
604.767.1531
ckim@rennie.com
rennie.com/charliekim

rennie