

# 510 15388 105 Avenue, Surrey

\$439,900



Welcome to G3 Residences! This 2 bed, 2 bath TOP FLOOR CORNER unit features a very spacious living space with 11 ft ceilings, double soundproof walls, and a fully equipped kitchen with stainless steel appliances. TWO PARKING spaces included! Located in the heart of Guildford, you are just steps to Guildford Town Centre, parks, schools, a variety of restaurants and many more! Easy access to Highway 1 and just minutes away from Transit. Perfect for the 1st time homebuyer or for an investor as rentals are allowed. Call now! Open house Feb. 17th, Saturday 2-4pm.

## KEY INFORMATION

MLS® R2239841

Residential Attached

Guildford

2 Bedrooms

2 Bathrooms

796 SF

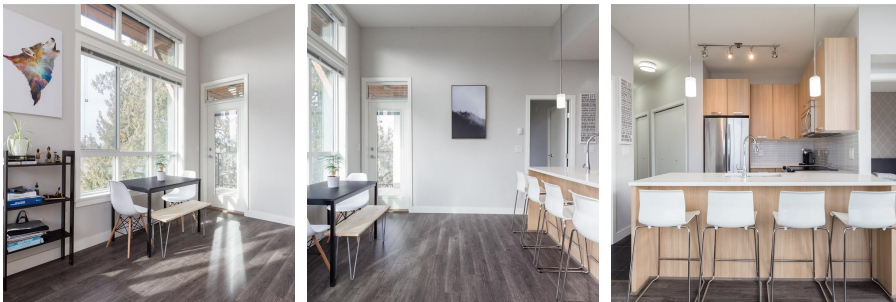
\$258.76 Maintenance Fees



## FEATURES

Year Built: 2014

Listed By: rennie & associates realty ltd.



**Tracy Lam** PREC\*  
778.688.8035  
tlam@rennie.com  
rennie.com/tracylam

**rennie**