

71 2450 161a Street, Surrey

\$638,000



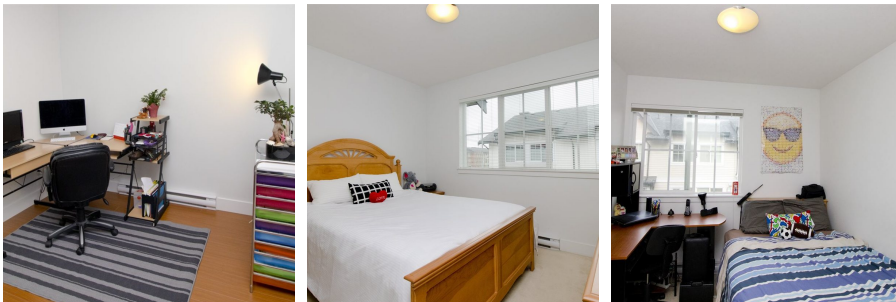
Bright and gorgeous 3 level townhome at Glenmore with 3 bed, 2.5 bath, and a large family room in a spacious and functional layout! Loaded with stainless steel appliances, stone counter tops, walk-out back yard, two car garage. Located right across from Morgan Crossing shopping district, steps from major and brand name retailers. Blocks away from tranquil park and a brand new rec centre with Olympix sized pool. Residents at Glenmore enjoy a large clubhouse with fitness centre, rec room, outdoor swimming pool and swirl tub, an indoor hockey arena, and a playground. Part of Sunnyside Elementary and Semiahmoo Secondary catchments. Extraordinary townhome built by renown developer Intracorp, call today for your private showing!

KEY INFORMATION

MLS® R2241865
Residential Attached
Grandview Surrey
3 Bedrooms
3 Bathrooms
1,355 SF

FEATURES

Year Built: 2010
Listed By: rennie & associates realty ltd.



Derek Liang
604.395.4516
dliang@rennie.com
rennie.com/derekliang

rennie